

**6th Meeting of the Commission
Lima, Peru, 30 January 2018 to 3 February 2018**

COMM 6 - INF 09 (19 Jan 2018)

Previously COMM 6 PROP 05

**Conservation and Management Measure for the Management of Bottom
Fishing in the SPRFMO Convention Area**

Australia and New Zealand



NEW ZEALAND
FOREIGN AFFAIRS & TRADE

19 January 2018

Dr. Johanne Fischer
Executive Secretary
South Pacific Regional Fisheries Management Organisation (SPRFMO)
PO Box 3797
Wellington 6140



New Zealand Minister
Foreign Affairs and Trade
Manatu Aorere

195 Lambton Quay
Private Bag 18-901
Wellington 5045
New Zealand

T +64 4 439 8000
F +64 4 472 9596

Dear Dr Fischer

I am writing regarding the proposal for a Conservation and Management Measure submitted by New Zealand and Australia COMM6-PROP05 (Bottom Fishing) on 11 December 2017.

It has become apparent in subsequent discussions between New Zealand and Australia that more work is required on the draft measure, particularly regarding issues and concerns raised by Members and complications related to catch limits. These matters would benefit from further development before we are in a position to propose the CMM for adoption. It would also be very helpful to receive feedback from Commission members on the key elements and proposed approach of the draft CMM at this stage. This feedback would facilitate consideration and adoption of the CMM at the 7th Commission meeting.

Accordingly we would like to notify you that New Zealand and Australia are withdrawing COMM6-PROP05 (and COMM6 PROP09 which makes consequential amendments to CMM 13-2016) and instead would like to convert the proposal to an information paper. New Zealand and Australia will seek that CMM03-2017 be extended for a further year, pending adoption of a new measure at the 7th Commission meeting in 2019.

Yours sincerely

Victoria Hallum
New Zealand Commissioner to SPRFMO

POLI-55-1674

www.mfat.govt.nz

UNCLASSIFIED

The Commission of the South Pacific Regional Fisheries Management Organisation;

RECOGNISING Article 2 of the Convention on the Conservation and Management of High Seas Fishery Resources in the South Pacific Ocean (the Convention), which provides that the objective of the Convention is, through the application of the precautionary approach and an ecosystem approach to fisheries management, to ensure the long-term conservation and sustainable use of fishery resources and, in so doing, to safeguard the marine ecosystems in which these resources occur; [New]

FURTHER RECOGNISING Articles 3(1)(a)(i) and (vii) of the Convention, which call on the Commission, in giving effect to the objectives of the Convention, to adopt Conservation and Management Measures (CMMs) that take account of international best practices and protect the marine ecosystem, particularly ecosystems with long recovery times following disturbance; [Source: PP1 of CMM 03-2017]

FURTHER RECOGNISING Articles 3(1)(b) and (2) of the Convention which call on the Commission to apply the precautionary approach and ecosystem based approach to fishery resources under the mandate of the Convention; [Source: PP2 of CMM 03-2017]

FURTHER RECOGNISING Article 4 of the Convention in which Contracting Parties acknowledge their duty to cooperate to ensure compatibility between conservation and management measures established for fishery resources that are identified as straddling areas under national jurisdiction and the adjacent high seas of the Convention;

MINDFUL of Article 31(1) of the Convention which calls on the Commission to cooperate with other regional fisheries management organisations (RFMOs), the Food and Agriculture Organization of the United Nations (FAO), other specialised agencies of the United Nations and other relevant organisations on issues of mutual interest; [Source: PP3 of CMM 03-2017]

RECALLING that in 2007, Participants in the International Consultations on the Establishment of the South Pacific RFMO adopted voluntary interim management measures, including *inter alia*, for the management of bottom fisheries in the Convention Area; [Source: PP4 of CMM 03-2017]

NOTING United Nations General Assembly (UNGA) Resolution 61/105 which calls upon RFMOs to assess, on the basis of the best available scientific information, whether individual bottom fishing activities would have significant adverse impacts on vulnerable marine ecosystems, and to ensure that if it is assessed that these activities would have significant adverse impacts, they are managed to prevent such impacts, or not authorised to proceed; [Source: PP5 of CMM 03-2017]

FURTHER NOTING UNGA Resolution 64/72 which calls upon RFMOs to establish and implement appropriate protocols for the implementation of UNGA Resolution 61/105, including definitions of what constitutes evidence of an encounter with a VME, in particular threshold levels and indicator species; and to implement the FAO International Guidelines for the Management of Deep-sea Fisheries in the High Seas (FAO, 2009; FAO Deep-sea Fisheries Guidelines) in order to sustainably manage fish stocks and protect vulnerable marine ecosystems (VMEs); [Source: PP6 of CMM 03-2017]

FURTHER NOTING UNGA Resolution 66/68 which encourages RFMOs to consider the results available from marine scientific research, including those obtained from seabed mapping programmes concerning the identification of areas containing VMEs, and to adopt CMMs to prevent significant adverse impacts from bottom fishing on such ecosystems,

consistent with the FAO Deep-sea Fisheries Guidelines, or to close such areas to bottom fishing until such CMMs are adopted, as well as to continue to undertake further marine scientific research, in accordance with international law as reflected in Part XIII of the Convention; [Source: PP7 of CMM 03-2017]

FURTHER NOTING UNGA Resolution 71/123 which calls upon RFMOs to use the full set of criteria in the FAO Deep-sea Fisheries Guidelines to identify where VMEs occur or are likely to occur as well as for assessing significant adverse impacts, to ensure that impact assessments, including for cumulative impacts of activities covered by the assessment, are conducted consistent with the FAO Deep-sea Fisheries Guidelines, are reviewed periodically and are revised whenever a substantial change in the fishery has occurred or there is relevant new information, and that, where such impact assessments have not been undertaken, they are carried out as a priority before authorizing bottom fishing activities, and to ensure that CMMs are based on and updated on the basis of the best available scientific information, noting in particular the need to improve effective implementation of thresholds and move-on rules; [New – incorporates reference to 2016 UNGA bottom fishing review from UNGA resolution]

BEARING IN MIND the description in the FAO Deep-sea Fisheries Guidelines of what constitutes significant adverse impacts, factors to be considered when determining the scale and significance of an impact, what constitutes temporary impacts and factors to be considered in determining whether an impact is temporary; [New – reference to FAO Deep-sea Fisheries Guidelines paragraphs 17 to 20]

REAFFIRMING the steps already taken by the Commission to address the impacts of large-scale pelagic driftnets and all deepwater gillnets in the Convention Area, through the implementation of CMM 08-2013 (Gillnetting); [Source: PP8 of CMM 03-2017];

COMMITTED to ensuring that bottom fishing is consistent with the long term sustainability of deep sea fish stocks and the protection of ecosystems; [Source: PP9 of CMM 03-2017]

RECOGNISING Articles 20(1)(a) and (d) of the Convention, which provide that the CMMs adopted by the Commission shall include measures to ensure the long-term sustainability of fishery resources and promote the objective of their responsible utilisation, and to protect the habitats and marine ecosystems in which fishery resources and non-target and associated or dependent species occur from the impacts of fishing, including measures to prevent significant adverse impacts on VMEs and precautionary measures where it cannot adequately be determined whether VMEs are present or whether fishing would cause significant adverse impacts on VMEs; [New]

FURTHER RECOGNISING Article 22 of the Convention, which provides that a fishery that has not been subject to fishing or has not been subject to fishing with a particular gear type or technique for ten years or more shall be opened only when the Commission has adopted cautious preliminary CMMs in respect of that fishery, and, as appropriate, non-target and associated or dependent species, and appropriate measures to protect the marine ecosystem in which that fishery occurs from adverse impacts of fishing activities; [New]

ADOPTS the following CMM in accordance with Articles 8, 20 and 22 of the Convention:

Objective

1. The objective of the CMM is, through the application of the precautionary approach and an ecosystem approach to fisheries management, to ensure the long-term conservation and sustainable use of deep sea fishery resources, including target fish

stocks as well as non-target or associated and dependent species, and, in doing so, to safeguard the marine ecosystems in which these resources occur, including inter alia the prevention of significant adverse impacts on vulnerable marine ecosystems.
[Source: para 1 of CMM 03-2017]

Definitions

- 2 For the purposes of this CMM, the term “bottom fishing” is defined as fishing using any gear type likely to come in contact with the seafloor or benthic organisms during the normal course of operations, and includes Bottom trawl, Mid-water trawl and Bottom line, as defined in paragraphs 3 to 5. [Source: para 4 of CMM 03-2017 with addition of cross-references to gear type definitions below].
- 3 For the purposes of this CMM, the term “Bottom trawl” is defined as fishing using a trawl net that is designed to come into contact with the seabed. [Source: New Zealand high seas permit definition]
- 4 For the purposes of this CMM, the term “Mid-water trawl” is defined as fishing for benthic-pelagic species using a trawl net that is designed to be pulled through the water near the seabed and not to come into extended contact with the seabed. [Source: New Zealand high seas permit definition, adapted for SPRFMO context]
- 5 For the purposes of this CMM, the term “Bottom line” is defined as fishing using a line to which a hook or hooks (whether baited or not) are attached and rigged to sink and fish on or near the seabed. This includes, but is not limited to, longlines, hand lines, drop lines, trot lines, and dahn lines. [Source: New Zealand high seas permit definition]
- 6 For the purposes of this CMM, the term “vulnerable marine ecosystem” (VME) means a marine ecosystem that has the characteristics referred to in paragraph 42 of, and elaborated in the Annex to, the FAO Deep-sea Fisheries Guidelines [Source: para 3 of CMM 03-2017]
- 7 For the purposes of this CMM, the term “Evaluated Area” means those parts of the Convention Area that are within the area starting at a point of 24°S latitude and 146°W, extending southward to latitude 57° 30S, then eastward to 150°E longitude, northward to 55°S, eastward to 143°E, northward to 24°S and eastward back to point of origin. [New definition to allow management of bottom fisheries in area evaluated by the Scientific Committee for likelihood of vulnerable marine ecosystems].
- 8 For the purposes of this CMM, the term “Management Area(s)” means those parts of the Evaluated Area specified in paragraph 15. [New – see para 7]
- 9 For the purposes of this CMM, the term “fishing year” means the period starting 1 January and ending 31 December in any year. [New definition].

General provisions

- 10 This CMM applies to the entire Convention Area. [New]
- 11 This CMM is adopted as a cautious preliminary conservation and management measure under Article 22(1) of the Convention. [New]
- 12 This CMM applies to all fishing vessels flying the flag of a Member or Cooperating non-Contracting Party (CNCP) to the South Pacific Regional Fisheries Management Organisation (SPRFMO) engaging or intending to engage in bottom fishing in the Convention Area. A reference in this CMM to fishing and related activities *of* a Member or CNCP (such as *its* fishing, *its* vessel) is taken to refer to fishing and related activities undertaken by vessels flying its flag. [Source: para 2 of CMM 03-2017, and para 2 of SIOFA CMM 2017/01]
- 13 Members and CNCPs shall prohibit vessels flying their flag from participating in bottom fishing activities in the Convention Area other than in accordance with the provisions of this CMM. [Source: para 8(b) of CMM 03-2017 with “agree to” replaced by “shall”]
- 14 Only fishing vessels duly authorised pursuant to Article 25 of the Convention and in accordance with CMM 05-2016 (Record of Vessels) that are flagged to Members and CNCPs shall participate in bottom fishing activities in the Convention Area. [Source: para 2 of CMM 01-2017 on Jack Mackerel]

Bottom fishing Management Areas [New]

- 15 The Commission hereby establishes within the Evaluated Area the following Management Areas, the coordinates for which are provided in Annex 1:
 - (a) Bottom trawl¹ Management Area
 - (b) Mid-water trawl² Management Area
 - (c) Bottom line³ Management Area
- 16 Bottom fishing in the Convention Area shall occur only in the three Management Areas established in paragraph 15 and in accordance with the terms of this CMM. CMM 13-2016 (Exploratory Fisheries) does not apply to bottom fishing in the three Management Areas established in paragraph 15.
- 17 Notwithstanding paragraphs 13 and 16, proposals to undertake bottom fishing outside any of the three Management Areas established in paragraph 15, including using other bottom fishing methods within the Evaluated Area, or to undertake bottom fishing

¹ See definition in paragraph 3.

² See definition in paragraph 4.

³ See definition in paragraph 5.

outside of the Evaluated Area, shall be handled in accordance with CMM 13-2016 (Exploratory Fisheries).

- 18 The Commission may in future establish, disestablish, or adjust the boundaries of Evaluated Areas or Management Areas, based on advice from the Scientific Committee.

Catch limits and monitoring for deep sea fish stocks [New]

- 19 The following precautionary catch limits are set by the Commission on the basis of the advice of the Scientific Committee, based on its stock assessment framework:
- (a) The total catch of *Hoplostethus atlanticus* in the Louisville Ridge⁴ in the 2018 and 2019 fishing years shall be limited to 1140 tonnes in each fishing year. The catch limit may be further subdivided or revised, based on advice from the Scientific Committee.
 - (b) The total catch of *Hoplostethus atlanticus* in the Tasman Sea⁵ in the 2018, 2019 and 2020 fishing years shall be limited to 346 tonnes in each fishing year. The catch limit may be further subdivided or revised, based on advice from the Scientific Committee.
 - (c) The total catch of *Hoplostethus atlanticus* in Westpac Bank⁶ in the 2018 and 2019 fishing years, or until reviewed, whichever is sooner, shall be limited to 400 tonnes in each fishing year.
 - (d) The total catch of *Hoplostethus atlanticus* in the South Tasman Rise⁷ shall be 0 tonnes until otherwise decided by the Commission, based on advice from the Scientific Committee.
- 20 Until the Scientific Committee recommends precautionary catch limits on the basis of its stock assessment framework, the catch of all other target and non-target fish species in the Evaluated Area shall be limited to a level that does not exceed the annual average catch levels of that Member or CNCP over the period 1 January 2002 to 31 December 2006.

⁴ "Louisville Ridge" means all areas within the Evaluated Area to the east of 178°E.

⁵ "Tasman Sea" means all areas within the Evaluated Area to the west of 178°E, excluding the "Westpac Bank" and the "South Tasman Rise".

⁶ "Westpac Bank" means the high seas area adjacent to the New Zealand EEZ bounded by a line beginning at the intersection of the outer limit of the New Zealand EEZ at 39° S and 168° 34E; and extending:

- (i) from there west to 39°S and 166° 34E; and
- (ii) from there south to 40° 30S and 166° 30E; and
- (iii) from there due east to 40° 30S and 166° 30E; and
- (iv) from there generally north east to the point where the line began.

⁷ "South Tasman Rise" means the high seas area adjacent to the Australian EEZ bounded by a line beginning at the intersection of the outer limit of the Australian EEZ with the meridian of longitude 150° 00 E; and running:

- (i) from there south along that meridian to its intersection with the parallel of 48° 30 S; and
- (ii) from there west along that parallel to its intersection with the meridian of longitude 146° 30 E; and
- (iii) from there north along that meridian to the intersection with the outer limit of the Australian EEZ; and
- (iv) from there generally north easterly along that outer limit to the point where the line began.

- 21 Catch limits for any new or exploratory bottom fishery outside the Evaluated Area shall be determined in accordance with CMM 13-2016.
- 22 The Scientific Committee will provide regular advice on the status of each target species and non-target species to enable the Commission to continue meeting the objectives of the Convention and this CMM.
- 23 The Scientific Committee shall review its advice on target species status no later than every five (5) years, or a shorter period as determined by the Commission.
- 24 Members and CNCPs listed in Annex 2 are to share in the catch limits set out in paragraph 19 of this CMM for the relevant fishing year. [New – adapted from CMM 01-2017 (Jack Mackerel), para 5]
- 25 The provisions of this CMM are not necessarily to be considered precedents for future allocation or other decisions in accordance with Article 21 of the Convention relating to participation in bottom fisheries in the Convention Area and adjacent areas of national jurisdiction in the circumstances provided for in Article 20(4)(ii) and (iii) with the consent of the relevant coastal State Member or Members. [Source: CMM 03-2017, para 7]
- 26 Catches will be attributed to the Flag State whose vessels have undertaken the fishing activities described in Article 1(1)(g)(i) and (ii) of the Convention. [Source: CMM 01-2017 Jack Mackerel, para 6]
- 27 Immediately after the deadline in paragraph 43(g) has passed for receipt of the weekly catch reports, the Executive Secretary shall notify all Members and CNCPs listed in Annex 2 of the total catch taken during the reporting period, the total aggregate catch for the season to date, and an estimate of the date upon which each of the catch limits in paragraph 19 and the provisional catch limits in paragraph 20 are likely to be reached for that season. In the event that the total catch of Members and CNCPs listed in Annex 2 reaches 70% of one of the above catch limits, the Executive Secretary shall inform the Members and CNCPs listed in Annex 2, with a copy to all other Members and CNCPs as soon as possible. If the estimated date of completion of the relevant catch limit is within one week of the date on which the Secretariat received the report of the catches, the Executive Secretary shall inform all Members and CNCPs that the fishery will close on that estimated day or on the day on which the report was received, whichever is the later. [Source: CCAMLR CM 23-01, paras 5 and 7 and CMM 01-2017 (Jack Mackerel), para 7]

Marine mammals, seabirds, reptiles and other species of concern⁸

- 28 Members and CNCPs shall require vessels flying their flag and undertaking bottom fishing activities to implement seabird mitigation measures in accordance with CMM

⁸ “Other species of concern” means the list contained in Annex 14 of CMM 02-2017 (Data standards).

09-2017 (minimising bycatch of seabirds in the SPRFMO Convention Area), and shall report annually to the Commission on bycatch rates and total bycatch estimates in accordance with CMM 02-2017 (Data Standards) and the Guidelines for Annual National Reports to the SPRFMO Scientific Committee.

- 29 The Scientific Committee shall provide advice annually to the Commission on:
- (a) direct and indirect interactions between bottom fishing activities and marine mammals, seabirds, reptiles and other species of concern;
 - (b) any recommended spatial or temporal closures or spatially/ temporally limited gear prohibitions for any identified hotspots of these species; and
 - (c) any recommended bycatch limits and/ or measures for an encounter protocol for any of these species.

Assessment of proposed bottom fishing

- 30 All proposals to undertake bottom fishing activities in one of the Management Areas established in paragraph 15 shall be subject to an assessment process, based on the best available scientific information, to determine if such activities, taking account of the history of bottom fishing in the areas proposed and the cumulative impacts of the proposed activities, would contribute to having significant adverse impacts on VMEs, and to ensure that if it is determined that these activities would make such contributions, that they are managed to prevent such impacts or are not authorised to proceed. The assessments shall follow the following procedures: [Source: CCAMLR CM 22-06, para 7]
- (a) Each Member or CNCP proposing to participate in bottom fishing activities shall submit to the Scientific Committee a proposed assessment based on the SPRFMO Bottom Fishery Impact Assessment Standard (SPRFMO BFIAS⁹) with the best available data of the known and anticipated impacts of its bottom fishing activities on deep sea fish stocks and VMEs, including benthos and benthic communities, not less than 60 days prior to the annual meeting of the Scientific Committee. These submissions shall also include the mitigation measures proposed by the Member or CNCP to prevent such impacts.
 - (b) The Scientific Committee shall undertake a review of the proposed assessment, according to procedures and standards it develops, and provide advice to the Commission as to whether the proposed bottom fishing activities would contribute to having significant adverse impacts on deep sea fish stocks and VMEs and, if so, whether the proposed or additional mitigation measures would prevent such impacts. In its review of the proposed assessment, the Scientific Committee may use additional information available to it, including information from other fisheries in the region or similar fisheries elsewhere. The Scientific Committee is not obliged to consider, or

⁹ As adopted at the third session of the Preparatory Conference, 2012, available at: <http://www.sprfmo.int/assets/Meetings/Meetings-before-2013/Scientific-Working-Group/SWG-06-2008/a-Miscellaneous-Documents/SPRFMO-Bottom-Fishing-Impact-Assessment-Standardagreed-Vanuatu-Fri23Sep2011-1140am.pdf>

provide advice on, proposed assessments provided after the deadline for submission of proposed assessments contained in paragraph 30(a).

- (c) The Commission shall, on the basis of a proposed assessment and the Scientific Committee's review of the proposed assessment, taking into account any recommendations and advice of the Scientific Committee, consider whether, and if applicable the extent to which, bottom fishing in the Management Area(s) for which the proposed assessment was conducted, should be authorised; which, if any, additional measures to those proposed are required pursuant to Article 20 to prevent significant adverse impacts on VMEs; and which, if any, additional precautionary measures are required where it cannot adequately be determined whether VMEs are present or whether fishing could cause significant adverse impacts on VMEs. In relation to an application to target a species for which no total catch exists, the Commission shall consider an exemption for such a Member or CNCP to the catch history requirements referred to in paragraph 20, bearing in mind the need to be precautionary.
 - (d) For those Members or CNCPs that previously undertook and submitted an assessment described in paragraph 8(a) of CMM 03-2017 (or the relevant provision of CMM 4.03 or CMM 2.03 as in force at that time), the Member or CNCP does not need to submit the assessment otherwise required in paragraph 30(a) above if:
 - (i) an assessment has already been submitted for the fleet and the associated gear configurations for a prior fishing year; and
 - (ii) the information submitted in the previous assessment would continue to apply in the upcoming fishing year.
- 31 Members and CNCPs shall ensure that an updated proposed assessment meeting the requirements contained in paragraph 30(a) is submitted to the Scientific Committee and Commission when a substantial change in the fishery has occurred, such that it is likely that the risk or impact of the fishery may have changed, or when there is a material change to the SPRFMO BFIAS. [Source: CMM 03-2017, para 14]
- 32 The Secretariat shall make publicly available on the SPRFMO website all proposed assessments as well as the Scientific Committee's review of such assessments in accordance with its usual procedures, and shall invite comment on proposed assessments. [Source: CMM 03-2017, para 15]
- 33 The Scientific Committee shall review the SPRFMO BFIAS no later than 2019 and regularly thereafter to ensure that it reflects, as appropriate, best practice and the objectives of this CMM. [New]

Encounters with potential VMEs

- 34 For the purposes of this section of the CMM, the term "VME indicator taxa" means any benthic organism listed in Annex 3. [Source: CCAMLR CM 22-07, para 2(ii)]

- 35 Where VME indicator taxa at or above the weight limits in Annex 4, or 5 or more different VME indicator taxa, are encountered in the course of fishing, Members and CNCPs shall require any vessel flying their flag to:
- (a) cease bottom fishing activities immediately within an encounter area of:
 - (i) for bottom or mid water trawling, one (1) nautical mile either side of the trawl track extended by one (1) nautical mile at each end; or
 - (ii) for bottom longline, a radius of one (1) nautical mile from the midpoint of the line segment;¹⁰ and
 - (b) report the encounter immediately to the Secretariat in accordance with the Guidelines for the preparation and submission of notifications of encounters with potential VMEs, contained in Annex 5. [Source: CCAMLR CM 22-07, para 4 and SIOFA CMM 2017/01, para 12]
- 36 On receipt of a notification under paragraph 35(b) the Secretariat shall:
- (a) record the location of the encounter area; and
 - (b) within three (3) working days of receipt, notify the VMS service provider and all flag States with fishing vessels participating in bottom fishing activities in the Convention Area that the encounter area in paragraph 35(a) is closed, until such time as alternative actions are determined by the Commission under paragraph 38. [Source: CCAMLR CM 22-07, para 6]
- 37 The encounter area in paragraph 35(a) shall remain closed to bottom fishing until it is reviewed by the Scientific Committee and management actions are determined by the Commission.
- 38 Members and CNCPs shall submit to the Secretariat annual reports of all encounters by vessels flying their flag with VME indicator taxa (including those below the threshold in paragraph 35) and other benthic bycatch, consistent with CMM 02-2017 (Data Standards), to enable an annual review of benthic bycatch data. The Secretariat shall compile a consolidated report based on information received from Members and CNCPs, for consideration by the Scientific Committee.
- 39 The Scientific Committee shall review annually, or more frequently as needed, the number and location of encounters with potential VMEs and provide advice and recommendations to the Commission on measures to prevent significant adverse impacts to VMEs in the SPRFMO Convention Area.
- 40 The Scientific Committee shall review the VME indicator thresholds and encounter area size contained in paragraph 35 no later than its 2020 meeting, to ensure their appropriateness for achieving the objective of this CMM.

¹⁰ Line segment means a 1000 hook section of line or a 1200 metre section of line, whichever is the shorter.

- 41 Nothing in this CMM shall prevent flag States from taking additional measures compatible with this measure in relation to encounters with VME indicator taxa below the threshold in paragraph 35.

Monitoring and control of bottom fishing activities

- 42 Members and CNCPs whose vessels participate in bottom fishing activities shall:
- a) ensure that their vessels are equipped and configured so that they can comply with all relevant SPRFMO CMMs and shall only authorise their vessels to fish in the Convention Area where they are able to exercise their responsibilities as a flag State under the Convention and the CMMs;
 - b) ensure that they meet the level of observer coverage specified in this CMM to collect data in accordance with this and other CMMs;
 - c) prohibit their vessels from participating in bottom fishing if the agreed minimum required data submissions have not been provided in accordance with the agreed subset of the vessel identification data requirements;
 - d) require each of their vessels to act in accordance with CMM 06-2017 (Commission VMS), polling once every 30 minutes for the duration of the trip notwithstanding para 3(b)(i) of CMM 02-2017 (Data standards);¹¹
 - e) in respect of each vessel, submit VMS reports in an electronic format to the Secretariat in accordance with CMM 06-2017;
 - f) require each of their vessels to report tow or set start and end position to 1/100th degree resolution - decimal format, notwithstanding the Annexes of CMM 02-2017 (Data standards); and
 - g) report, in an electronic format, the weekly catch of their flagged vessels to the Secretariat within 48 hours of the end of each week, consistent with the SPRFMO Data submission templates.
- 43 The Executive Secretary shall circulate monthly catch reports (from data provided in accordance with paragraph 42(g)) aggregated by flag State, to all Members and CNCPs as soon as possible, once collated.

Observer Coverage

- 44 Until the Commission adopts an Observer Programme in accordance with Article 28 of the Convention, all Members and CNCPs participating in bottom fishing activities pursuant to this CMM shall ensure scientific observer coverage of trips for vessels flying their flag consistent with the minimum observer coverage levels set out in Annex 6 and shall ensure that such observers collect and report data as described in CMM 02-2017 (Data Standards). [Source: CMM 01-2017 para 22 for Jack Mackerel]
- 45 Nothing in this measure shall affect the rights of Members and CNCPs to apply higher levels of observer coverage than set out in Annex 6, in accordance with their domestic requirements. [Source: CMM 09-2017 on Seabirds, para 12]

¹¹ The term "duration of the trip" commences from the time the vessel departs from port, includes all times that it is in the Convention Area and concludes once it enters port.

Electronic Monitoring [New]

- 46 To complement human observers, Members and CNCPs may also require their vessels to have an electronic monitoring system installed and operating that is capable of recording (including visually) and storing recordings of all fishing events for data collection purposes.

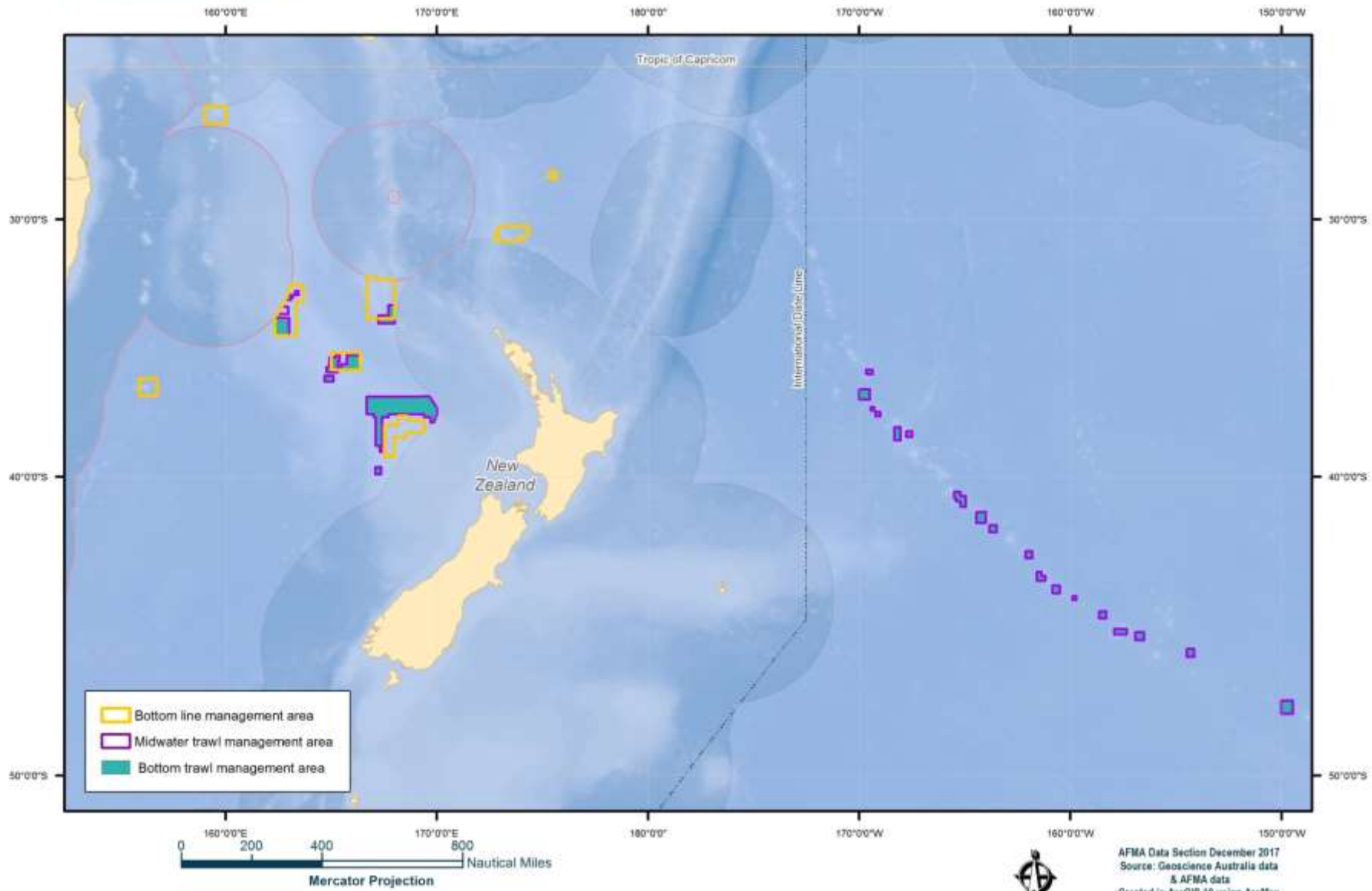
Review

- 47 This CMM shall be reviewed at least every five (5) years by the Commission. Such review shall take into account the advice of the Scientific Committee and the CMM's effectiveness in achieving its objective.

Annex 1: Coordinates for each bottom fishing management area and an indicative map

Indicative Map of SPRFMO Management Areas

JN: 66,729



(a) Bottom Trawl Management Area coordinates

| ID | Name | Latitude | Longitude |
|----|---------------|-------------|--------------|
| 1 | Louisville 1 | 48 05.0000S | 150 00.0000W |
| 1 | Louisville 1 | 47 40.0000S | 150 00.0000W |
| 1 | Louisville 1 | 47 40.0000S | 149 27.0000W |
| 1 | Louisville 1 | 48 05.0000S | 149 27.0000W |
| 1 | Louisville 1 | 48 05.0000S | 150 00.0000W |
| 3 | Louisville 3 | 45 42.0000S | 156 55.0000W |
| 3 | Louisville 3 | 45 25.9844S | 156 55.0073W |
| 3 | Louisville 3 | 45 26.0000S | 156 30.0000W |
| 3 | Louisville 3 | 45 42.0007S | 156 29.9816W |
| 3 | Louisville 3 | 45 42.0000S | 156 55.0000W |
| 4 | Louisville 5 | 44 58.0000S | 158 38.0000W |
| 4 | Louisville 5 | 44 44.0000S | 158 38.0000W |
| 4 | Louisville 5 | 44 44.0000S | 158 18.0000W |
| 4 | Louisville 5 | 44 58.0000S | 158 18.0000W |
| 4 | Louisville 5 | 44 58.0000S | 158 38.0000W |
| 5 | Louisville 7 | 44 07.0000S | 160 50.5000W |
| 5 | Louisville 7 | 43 51.5332S | 160 50.7897W |
| 5 | Louisville 7 | 43 51.5332S | 160 29.2126W |
| 5 | Louisville 7 | 44 07.0000S | 160 29.0000W |
| 5 | Louisville 7 | 44 07.0000S | 160 50.5000W |
| 6 | Louisville 8 | 43 41.2401S | 161 35.3556W |
| 6 | Louisville 8 | 43 22.5013S | 161 35.3556W |
| 6 | Louisville 8 | 43 22.5688S | 161 21.9002W |
| 6 | Louisville 8 | 43 31.3681S | 161 21.7703W |
| 6 | Louisville 8 | 43 31.3621S | 161 10.1681W |
| 6 | Louisville 8 | 43 41.3711S | 161 10.1681W |
| 6 | Louisville 8 | 43 41.2401S | 161 35.3556W |
| 7 | Louisville 9 | 42 54.5000S | 162 07.0000W |
| 7 | Louisville 9 | 42 40.0000S | 162 07.0000W |
| 7 | Louisville 9 | 42 40.0000S | 161 48.0000W |
| 7 | Louisville 9 | 42 54.5000S | 161 48.0000W |
| 7 | Louisville 9 | 42 54.5000S | 162 07.0000W |
| 8 | Louisville 10 | 42 00.0000S | 163 29.5000W |
| 8 | Louisville 10 | 42 00.0000S | 163 49.0000W |
| 8 | Louisville 10 | 41 45.0000S | 163 49.0000W |
| 8 | Louisville 10 | 41 45.0000S | 163 29.5000W |
| 8 | Louisville 10 | 42 00.0000S | 163 29.5000W |
| 9 | Louisville 11 | 41 40.0000S | 164 00.0000W |
| 9 | Louisville 11 | 41 40.0000S | 164 27.0000W |
| 9 | Louisville 11 | 41 17.0000S | 164 27.0000W |
| 9 | Louisville 11 | 41 17.0000S | 164 00.0000W |
| 9 | Louisville 11 | 41 40.0000S | 164 00.0000W |

| | | | |
|----|----------------------------|-------------|--------------|
| 10 | Louisville 12 | 40 42.0007S | 164 56.7114W |
| 10 | Louisville 12 | 41 05.9655S | 164 56.4074W |
| 10 | Louisville 12 | 41 05.9655S | 165 11.9091W |
| 10 | Louisville 12 | 40 54.0014S | 165 12.0007W |
| 10 | Louisville 12 | 40 54.0014S | 165 24.0014W |
| 10 | Louisville 12 | 40 47.9992S | 165 24.0014W |
| 10 | Louisville 12 | 40 47.9992S | 165 30.0000W |
| 10 | Louisville 12 | 40 32.9333S | 165 29.9231W |
| 10 | Louisville 12 | 40 32.8967S | 165 11.9567W |
| 10 | Louisville 12 | 40 42.0007S | 165 12.0007W |
| 10 | Louisville 12 | 40 42.0007S | 164 56.7114W |
| 12 | Louisville 13 | 38 32.1831S | 167 47.0674W |
| 12 | Louisville 13 | 38 20.0134S | 167 47.0674W |
| 12 | Louisville 13 | 38 20.0000S | 167 29.0000W |
| 12 | Louisville 13 | 38 32.0000S | 167 29.0000W |
| 12 | Louisville 13 | 38 32.1831S | 167 47.0674W |
| 13 | Louisville 14 | 38 39.9565S | 168 01.9735W |
| 13 | Louisville 14 | 38 40.0000S | 168 20.0000W |
| 13 | Louisville 14 | 38 11.0000S | 168 20.0000W |
| 13 | Louisville 14 | 38 11.0125S | 168 01.7848W |
| 13 | Louisville 14 | 38 39.9565S | 168 01.9735W |
| 15 | Louisville 15 | 37 35.8967S | 168 59.9080W |
| 15 | Louisville 15 | 37 46.2611S | 168 59.8384W |
| 15 | Louisville 15 | 37 46.2611S | 169 13.2728W |
| 15 | Louisville 15 | 37 35.8721S | 169 13.2747W |
| 15 | Louisville 15 | 37 35.8967S | 168 59.9080W |
| 16 | Louisville 16 | 37 33.0000S | 169 27.0000W |
| 16 | Louisville 16 | 37 25.0000S | 169 27.0000W |
| 16 | Louisville 16 | 37 25.0000S | 169 17.0000W |
| 16 | Louisville 16 | 37 33.0000S | 169 17.0000W |
| 16 | Louisville 16 | 37 33.0000S | 169 27.0000W |
| 17 | Northwest Challenger | 37 01.2707S | 169 38.1660E |
| | Southeast along NZ EEZ to: | | |
| 17 | Northwest Challenger | 37 27.5900S | 170 00.0073E |
| 17 | Northwest Challenger | 37 42.2200S | 170 00.0073E |
| | Southwest along NZ EEZ to: | | |
| 17 | Northwest Challenger | 38 00.0000S | 169 51.3580E |
| 17 | Northwest Challenger | 38 00.0000S | 169 42.0043E |
| 17 | Northwest Challenger | 37 47.9992S | 169 42.0043E |
| 17 | Northwest Challenger | 37 47.9992S | 169 24.0051E |
| 17 | Northwest Challenger | 37 41.9824S | 169 23.9209E |
| 17 | Northwest Challenger | 37 42.0007S | 167 42.0043E |
| 17 | Northwest Challenger | 37 47.9992S | 167 42.0043E |

| | | | |
|----|-------------------------|-------------|--------------|
| 17 | Northwest Challenger | 37 47.9992S | 167 24.0051E |
| 17 | Northwest Challenger | 39 05.9985S | 167 24.0051E |
| 17 | Northwest Challenger | 39 05.9985S | 167 18.0065E |
| 17 | Northwest Challenger | 38 51.9946S | 167 18.0065E |
| 17 | Northwest Challenger | 38 52.0788S | 167 06.0534E |
| 17 | Northwest Challenger | 37 47.9992S | 167 06.0058E |
| 17 | Northwest Challenger | 37 47.9992S | 167 00.0073E |
| 17 | Northwest Challenger | 37 42.0007S | 167 00.0073E |
| 17 | Northwest Challenger | 37 41.8505S | 166 40.0012E |
| 17 | Northwest Challenger | 37 01.3330S | 166 40.0012E |
| 17 | Northwest Challenger | 37 01.2707S | 170 00.2453E |
| 18 | Louisville 17 | 36 45.0000S | 169 30.0000W |
| 18 | Louisville 17 | 37 08.0000S | 169 30.0000W |
| 18 | Louisville 17 | 37 08.0000S | 170 00.0000W |
| 18 | Louisville 17 | 36 45.0000S | 170 00.0000W |
| 18 | Louisville 17 | 36 45.0000S | 169 30.0000W |
| 19 | S. Lord Howe South | 36 26.9824S | 164 40.7812E |
| 19 | S. Lord Howe South | 36 13.4582S | 164 40.8288E |
| 19 | S. Lord Howe South | 36 13.5058S | 165 06.0534E |
| 19 | S. Lord Howe South | 36 26.8029S | 165 06.0314E |
| 19 | S. Lord Howe South | 36 26.9824S | 164 40.7812E |
| 20 | Louisville 18 | 36 10.0000S | 169 22.0000W |
| 20 | Louisville 18 | 36 10.0000S | 169 40.0000W |
| 20 | Louisville 18 | 36 00.0000S | 169 40.0000W |
| 20 | Louisville 18 | 36 00.0000S | 169 22.0000W |
| 20 | Louisville 18 | 36 10.0000S | 169 22.0000W |
| 21 | S. Lord Howe West | 35 31.1206S | 164 53.8366E |
| 21 | S. Lord Howe West | 35 31.1865S | 165 13.5534E |
| 21 | S. Lord Howe West | 35 20.9985S | 165 13.5534E |
| 21 | S. Lord Howe West | 35 20.9985S | 165 24.0051E |
| 21 | S. Lord Howe West | 35 35.9985S | 165 24.0051E |
| 21 | S. Lord Howe West | 35 35.9985S | 165 18.0065E |
| 21 | S. Lord Howe West | 36 05.9985S | 165 18.0065E |
| 21 | S. Lord Howe West | 36 05.9692S | 164 46.2524E |
| 21 | S. Lord Howe West | 35 53.9465S | 164 46.3842E |
| 21 | S. Lord Howe West | 35 54.0014S | 164 54.0051E |
| 21 | S. Lord Howe West | 35 31.1206S | 164 53.8366E |
| 30 | N. Lord Howe Central | 33 16.4025S | 162 52.5402E |
| 30 | N. Lord Howe Central | 33 09.3980S | 162 52.5402E |
| | North along Aus EEZ to: | | |
| 30 | N. Lord Howe Central | 33 04.3981S | 162 54.9500E |
| 30 | N. Lord Howe Central | 33 04.3981S | 163 10.5432E |
| 30 | N. Lord Howe Central | 33 10.3967S | 163 10.5432E |
| 30 | N. Lord Howe Central | 33 10.3967S | 163 04.5410E |

| | | | |
|----|----------------------|-------------|--------------|
| 30 | N. Lord Howe Central | 33 16.4025S | 163 04.5410E |
| 30 | N. Lord Howe Central | 33 16.4025S | 162 52.5402E |
| 31 | N. Lord Howe North | 33 04.4165S | 163 16.6149E |
| 31 | N. Lord Howe North | 32 54.6496S | 163 16.6149E |
| 31 | N. Lord Howe North | 32 54.6496S | 163 26.3818E |
| 31 | N. Lord Howe North | 33 04.4165S | 163 26.3818E |
| 31 | N. Lord Howe North | 33 04.4165S | 163 16.6149E |
| 32 | Louisville 4 | 45 19.5000S | 157 55.0000W |
| 32 | Louisville 4 | 45 19.5000S | 157 19.0000W |
| 32 | Louisville 4 | 45 30.0000S | 157 19.0000W |
| 32 | Louisville 4 | 45 30.0000S | 157 55.0000W |
| 32 | Louisville 4 | 45 19.5000S | 157 55.0000W |
| 33 | Louisville 6 | 44 21.0000S | 159 54.0000W |
| 33 | Louisville 6 | 44 13.0000S | 159 54.0000W |
| 33 | Louisville 6 | 44 13.0000S | 159 43.0000W |
| 33 | Louisville 6 | 44 21.0000S | 159 43.0000W |
| 33 | Louisville 6 | 44 21.0000S | 159 54.0000W |
| 35 | Westpac Bank | 39 55.0000S | 167 05.0000E |
| 35 | Westpac Bank | 39 39.0000S | 167 05.0000E |
| 35 | Westpac Bank | 39 39.1029S | 167 21.0926E |
| 35 | Westpac Bank | 39 54.9704S | 167 21.0926E |
| 35 | Westpac Bank | 39 55.0000S | 167 05.0000E |
| 36 | Louisville 2 | 46 14.9485S | 154 28.6530W |
| 36 | Louisville 2 | 45 59.0321S | 154 28.6530W |
| 36 | Louisville 2 | 45 59.0321S | 154 07.3469W |
| 36 | Louisville 2 | 46 14.9485S | 154 07.4353W |
| 36 | Louisville 2 | 46 14.9485S | 154 28.6530W |
| 23 | S. Lord Howe East | 36 00.6478S | 165 25.9548E |
| 23 | S. Lord Howe East | 35 47.0000S | 165 26.0000E |
| 23 | S. Lord Howe East | 35 47.0000S | 165 44.0000E |
| 23 | S. Lord Howe East | 35 26.0000S | 165 44.0000E |
| 23 | S. Lord Howe East | 35 26.1571S | 166 21.8198E |
| 23 | S. Lord Howe East | 36 00.5154S | 166 21.9150E |
| 23 | S. Lord Howe East | 36 00.6478S | 165 25.9548E |
| 26 | N. Lord Howe South | 34 04.1939S | 163 00.0071E |
| 26 | N. Lord Howe South | 34 40.0000S | 163 00.0000E |
| 26 | N. Lord Howe South | 34 40.0000S | 162 20.0000E |
| 26 | N. Lord Howe South | 34 04.0369S | 162 20.0059E |
| 26 | N. Lord Howe South | 34 04.1939S | 163 00.0071E |
| 29 | Wanganella | 34 12.0000S | 168 00.0000E |
| 29 | Wanganella | 34 11.7253S | 167 13.0335E |
| 29 | Wanganella | 33 52.4036S | 167 13.0335E |
| 29 | Wanganella | 33 52.4823S | 167 42.0909E |
| 29 | Wanganella | 33 28.4244S | 167 42.1853E |

| | | | |
|----|------------|-------------|--------------|
| 29 | Wanganella | 33 28.5826S | 168 00.1103E |
| 29 | Wanganella | 33 54.0559S | 168 00.2047E |
| 29 | Wanganella | 34 01.2891S | 168 00.0848E |
| 29 | Wanganella | 34 12.0000S | 168 00.0000E |

(b) Mid-water trawl Management Area coordinates

| ID | Name | Latitude | Longitude |
|----|--------------------|-------------|--------------|
| 0 | Wanganella | 34 12.0000S | 168 00.0000E |
| 0 | Wanganella | 34 11.7253S | 167 13.0335E |
| 0 | Wanganella | 33 52.4036S | 167 13.0335E |
| 0 | Wanganella | 33 52.4823S | 167 42.0909E |
| 0 | Wanganella | 33 28.4244S | 167 42.1853E |
| 0 | Wanganella | 33 28.5826S | 168 00.1103E |
| 0 | Wanganella | 33 54.0559S | 168 00.2047E |
| 0 | Wanganella | 34 01.2891S | 168 00.0848E |
| 0 | Wanganella | 34 12.0000S | 168 00.0000E |
| 1 | N. Lord Howe South | 33 58.6650S | 163 00.0545E |
| 1 | N. Lord Howe South | 34 40.0000S | 163 00.0000E |
| 1 | N. Lord Howe South | 34 40.0000S | 162 20.0000E |
| 1 | N. Lord Howe South | 33 58.9008S | 162 20.0062E |
| 1 | N. Lord Howe South | 33 58.6650S | 163 00.0545E |
| 2 | S. Lord Howe East | 36 00.6478S | 165 25.9548E |
| 2 | S. Lord Howe East | 35 47.0000S | 165 26.0000E |
| 2 | S. Lord Howe East | 35 47.0000S | 165 44.0000E |
| 2 | S. Lord Howe East | 35 26.0000S | 165 44.0000E |
| 2 | S. Lord Howe East | 35 26.1571S | 166 21.8198E |
| 2 | S. Lord Howe East | 36 00.5154S | 166 21.9150E |
| 2 | S. Lord Howe East | 36 00.6478S | 165 25.9548E |
| 3 | Louisville 2 | 46 14.9485S | 154 28.6530W |
| 3 | Louisville 2 | 45 59.0321S | 154 28.6530W |
| 3 | Louisville 2 | 45 59.0321S | 154 07.3469W |
| 3 | Louisville 2 | 46 14.9485S | 154 07.4353W |
| 3 | Louisville 2 | 46 14.9485S | 154 28.6530W |
| 4 | Westpac Bank | 39 55.0000S | 167 05.0000E |
| 4 | Westpac Bank | 39 39.0000S | 167 05.0000E |
| 4 | Westpac Bank | 39 39.1029S | 167 21.0926E |
| 4 | Westpac Bank | 39 54.9704S | 167 21.0926E |
| 4 | Westpac Bank | 39 55.0000S | 167 05.0000E |
| 5 | Louisville 6 | 44 21.0000S | 159 54.0000W |
| 5 | Louisville 6 | 44 13.0000S | 159 54.0000W |
| 5 | Louisville 6 | 44 13.0000S | 159 43.0000W |
| 5 | Louisville 6 | 44 21.0000S | 159 43.0000W |
| 5 | Louisville 6 | 44 21.0000S | 159 54.0000W |
| 6 | Louisville 4 | 45 19.5000S | 157 55.0000W |

| | | | |
|----|---------------------|-------------|--------------|
| 6 | Louisville 4 | 45 19.5000S | 157 19.0000W |
| 6 | Louisville 4 | 45 30.0000S | 157 19.0000W |
| 6 | Louisville 4 | 45 30.0000S | 157 55.0000W |
| 6 | Louisville 4 | 45 19.5000S | 157 55.0000W |
| 7 | N. Lord Howe NE | 33 04.4165S | 163 16.6149E |
| 7 | N. Lord Howe NE | 32 54.6496S | 163 16.6149E |
| 7 | N. Lord Howe NE | 32 54.6496S | 163 26.3818E |
| 7 | N. Lord Howe NE | 33 04.4165S | 163 26.3818E |
| 7 | N. Lord Howe NE | 33 04.4165S | 163 16.6149E |
| 8 | N. Lord Howe NE2 | 33 16.4025S | 162 52.5402E |
| 8 | N. Lord Howe NE2 | 33 09.3980S | 162 52.5402E |
| | North along EEZ to: | | |
| 8 | N. Lord Howe NE2 | 33 04.3981S | 162 54.9500E |
| 8 | N. Lord Howe NE2 | 33 04.3981S | 163 10.5432E |
| 8 | N. Lord Howe NE2 | 33 10.3967S | 163 10.5432E |
| 8 | N. Lord Howe NE2 | 33 10.3967S | 163 04.5410E |
| 8 | N. Lord Howe NE2 | 33 16.4025S | 163 04.5410E |
| 8 | N. Lord Howe NE2 | 33 16.4025S | 162 52.5402E |
| 9 | S. Lord Howe West | 35 31.1206S | 164 53.8366E |
| 9 | S. Lord Howe West | 35 31.1865S | 165 13.5534E |
| 9 | S. Lord Howe West | 35 20.9985S | 165 13.5534E |
| 9 | S. Lord Howe West | 35 20.9985S | 165 24.0051E |
| 9 | S. Lord Howe West | 35 40.3884S | 165 24.0051E |
| 9 | S. Lord Howe West | 35 40.3884S | 165 18.0065E |
| 9 | S. Lord Howe West | 36 05.9985S | 165 18.0065E |
| 9 | S. Lord Howe West | 36 05.9692S | 164 46.2524E |
| 9 | S. Lord Howe West | 35 53.9465S | 164 46.3842E |
| 9 | S. Lord Howe West | 35 54.0014S | 164 54.0051E |
| 9 | S. Lord Howe West | 35 31.1206S | 164 53.8366E |
| 10 | Louisville 18 | 36 10.0000S | 169 22.0000W |
| 10 | Louisville 18 | 36 10.0000S | 169 40.0000W |
| 10 | Louisville 18 | 36 00.0000S | 169 40.0000W |
| 10 | Louisville 18 | 36 00.0000S | 169 22.0000W |
| 10 | Louisville 18 | 36 10.0000S | 169 22.0000W |
| 11 | S. Lord Howe South | 36 26.9824S | 164 40.7812E |
| 11 | S. Lord Howe South | 36 13.4582S | 164 40.8288E |
| 11 | S. Lord Howe South | 36 13.5058S | 165 06.0534E |
| 11 | S. Lord Howe South | 36 26.8029S | 165 06.0314E |
| 11 | S. Lord Howe South | 36 26.9824S | 164 40.7812E |
| 12 | Louisville 17 | 36 45.0000S | 169 30.0000W |
| 12 | Louisville 17 | 37 08.0000S | 169 30.0000W |
| 12 | Louisville 17 | 37 08.0000S | 170 00.0000W |
| 12 | Louisville 17 | 36 45.0000S | 170 00.0000W |
| 12 | Louisville 17 | 36 45.0000S | 169 30.0000W |

| | | | |
|----|------------------------|-------------|--------------|
| 13 | Northwest Challenger | 37 01.2707S | 169 38.1660E |
| | South along NZ EEZ to: | | |
| 13 | Northwest Challenger | 37 27.5900S | 170 00.0073E |
| 13 | Northwest Challenger | 37 42.2200S | 170 00.0073E |
| | South along NZ EEZ to: | | |
| 13 | Northwest Challenger | 38 00.0000S | 169 51.3580E |
| 13 | Northwest Challenger | 38 00.0000S | 169 42.0043E |
| 13 | Northwest Challenger | 37 47.9992S | 169 42.0043E |
| 13 | Northwest Challenger | 37 47.9992S | 169 24.0051E |
| 13 | Northwest Challenger | 37 41.9824S | 169 23.9209E |
| 13 | Northwest Challenger | 37 42.0007S | 167 42.0043E |
| 13 | Northwest Challenger | 37 47.9992S | 167 42.0043E |
| 13 | Northwest Challenger | 37 47.9992S | 167 24.0051E |
| 13 | Northwest Challenger | 39 05.9985S | 167 24.0051E |
| 13 | Northwest Challenger | 39 05.9985S | 167 18.0065E |
| 13 | Northwest Challenger | 38 51.9946S | 167 18.0065E |
| 13 | Northwest Challenger | 38 52.0788S | 167 06.0534E |
| 13 | Northwest Challenger | 37 47.9992S | 167 06.0058E |
| 13 | Northwest Challenger | 37 47.9992S | 167 00.0073E |
| 13 | Northwest Challenger | 37 42.0007S | 167 00.0073E |
| 13 | Northwest Challenger | 37 41.8505S | 166 40.0012E |
| 13 | Northwest Challenger | 37 01.3330S | 166 40.0012E |
| 13 | Northwest Challenger | 37 01.2707S | 170 00.2453E |
| 14 | Louisville 16 | 37 33.0000S | 169 27.0000W |
| 14 | Louisville 16 | 37 25.0000S | 169 27.0000W |
| 14 | Louisville 16 | 37 25.0000S | 169 17.0000W |
| 14 | Louisville 16 | 37 33.0000S | 169 17.0000W |
| 14 | Louisville 16 | 37 33.0000S | 169 27.0000W |
| 15 | Louisville 15 | 37 35.8967S | 168 59.9080W |
| 15 | Louisville 15 | 37 46.2611S | 168 59.8384W |
| 15 | Louisville 15 | 37 46.2611S | 169 13.2728W |
| 15 | Louisville 15 | 37 35.8721S | 169 13.2747W |
| 15 | Louisville 15 | 37 35.8967S | 168 59.9080W |
| 16 | Louisville 14 | 38 39.9565S | 168 01.9735W |
| 16 | Louisville 14 | 38 40.0000S | 168 20.0000W |
| 16 | Louisville 14 | 38 11.0000S | 168 20.0000W |
| 16 | Louisville 14 | 38 11.0125S | 168 01.7848W |
| 16 | Louisville 14 | 38 39.9565S | 168 01.9735W |
| 17 | Louisville 13 | 38 32.1831S | 167 47.0674W |
| 17 | Louisville 13 | 38 20.0134S | 167 47.0674W |
| 17 | Louisville 13 | 38 20.0000S | 167 29.0000W |
| 17 | Louisville 13 | 38 32.0000S | 167 29.0000W |
| 17 | Louisville 13 | 38 32.1831S | 167 47.0674W |
| 18 | Louisville 12 | 40 42.0007S | 164 56.7114W |

| | | | |
|----|---------------|-------------|--------------|
| 18 | Louisville 12 | 41 05.9655S | 164 56.4074W |
| 18 | Louisville 12 | 41 05.9655S | 165 11.9091W |
| 18 | Louisville 12 | 40 54.0014S | 165 12.0007W |
| 18 | Louisville 12 | 40 54.0014S | 165 24.0014W |
| 18 | Louisville 12 | 40 47.9992S | 165 24.0014W |
| 18 | Louisville 12 | 40 47.9992S | 165 30.0000W |
| 18 | Louisville 12 | 40 32.9333S | 165 29.9231W |
| 18 | Louisville 12 | 40 32.8967S | 165 11.9567W |
| 18 | Louisville 12 | 40 42.0007S | 165 12.0007W |
| 18 | Louisville 12 | 40 42.0007S | 164 56.7114W |
| 19 | Louisville 11 | 41 40.0000S | 164 00.0000W |
| 19 | Louisville 11 | 41 40.0000S | 164 27.0000W |
| 19 | Louisville 11 | 41 17.0000S | 164 27.0000W |
| 19 | Louisville 11 | 41 17.0000S | 164 00.0000W |
| 19 | Louisville 11 | 41 40.0000S | 164 00.0000W |
| 20 | Louisville 10 | 42 00.0000S | 163 29.5000W |
| 20 | Louisville 10 | 42 00.0000S | 163 49.0000W |
| 20 | Louisville 10 | 41 45.0000S | 163 49.0000W |
| 20 | Louisville 10 | 41 45.0000S | 163 29.5000W |
| 20 | Louisville 10 | 42 00.0000S | 163 29.5000W |
| 21 | Louisville 9 | 42 54.5000S | 162 07.0000W |
| 21 | Louisville 9 | 42 40.0000S | 162 07.0000W |
| 21 | Louisville 9 | 42 40.0000S | 161 48.0000W |
| 21 | Louisville 9 | 42 54.5000S | 161 48.0000W |
| 21 | Louisville 9 | 42 54.5000S | 162 07.0000W |
| 22 | Louisville 8 | 43 41.2401S | 161 35.3556W |
| 22 | Louisville 8 | 43 22.5013S | 161 35.3556W |
| 22 | Louisville 8 | 43 22.5688S | 161 21.9002W |
| 22 | Louisville 8 | 43 31.3681S | 161 21.7703W |
| 22 | Louisville 8 | 43 31.3621S | 161 10.1681W |
| 22 | Louisville 8 | 43 41.3711S | 161 10.1681W |
| 22 | Louisville 8 | 43 41.2401S | 161 35.3556W |
| 23 | Louisville 7 | 44 07.0000S | 160 50.5000W |
| 23 | Louisville 7 | 43 51.5332S | 160 50.7897W |
| 23 | Louisville 7 | 43 51.5332S | 160 29.2126W |
| 23 | Louisville 7 | 44 07.0000S | 160 29.0000W |
| 23 | Louisville 7 | 44 07.0000S | 160 50.5000W |
| 24 | Louisville 5 | 44 58.0000S | 158 38.0000W |
| 24 | Louisville 5 | 44 44.0000S | 158 38.0000W |
| 24 | Louisville 5 | 44 44.0000S | 158 18.0000W |
| 24 | Louisville 5 | 44 58.0000S | 158 18.0000W |
| 24 | Louisville 5 | 44 58.0000S | 158 38.0000W |
| 25 | Louisville 3 | 45 42.0000S | 156 55.0000W |
| 25 | Louisville 3 | 45 25.9844S | 156 55.0073W |

| | | | |
|----|----------------------|-------------|--------------|
| 25 | Louisville 3 | 45 26.0000S | 156 30.0000W |
| 25 | Louisville 3 | 45 42.0007S | 156 29.9816W |
| 25 | Louisville 3 | 45 42.0000S | 156 55.0000W |
| 26 | Louisville 1 | 48 05.0000S | 150 00.0000W |
| 26 | Louisville 1 | 47 40.0000S | 150 00.0000W |
| 26 | Louisville 1 | 47 40.0000S | 149 27.0000W |
| 26 | Louisville 1 | 48 05.0000S | 149 27.0000W |
| 26 | Louisville 1 | 48 05.0000S | 150 00.0000W |
| 27 | N. Lord Howe Central | 33 32.3448S | 162 57.6757E |
| 27 | N. Lord Howe Central | 33 49.6401S | 162 57.7721E |
| 27 | N. Lord Howe Central | 33 49.6401S | 162 25.6950E |
| | North along EEZ to: | | |
| 27 | N. Lord Howe Central | 33 32.5340S | 162 38.5090E |
| 27 | N. Lord Howe Central | 33 32.3448S | 162 57.6757E |

(c) Bottom line Management Area coordinates

| ID | Name | Latitude | Longitude |
|----|-----------------------------------|-------------|--------------|
| 0 | Wanganella | 34 00.0971S | 166 41.5980E |
| 0 | Wanganella | 32 20.9317S | 166 41.5980E |
| | East south east along Aus EEZ to: | | |
| 0 | Wanganella | 32 28.6410S | 167 59.6888E |
| 0 | Wanganella | 34 00.0971S | 167 59.4529E |
| 0 | Wanganella | 34 00.0971S | 166 52.2339E |
| 1 | NW Challenger | 39 17.1851S | 167 30.4934E |
| 1 | NW Challenger | 38 6.4339S | 167 30.4934E |
| 1 | NW Challenger | 38 6.4339S | 168 9.8342E |
| 1 | NW Challenger | 37 45.6031S | 168 9.8339E |
| 1 | NW Challenger | 37 45.6141S | 168 35.8725E |
| 1 | NW Challenger | 37 55.238S | 168 35.8727E |
| 1 | NW Challenger | 37 55.237S | 169 25.4025E |
| 1 | Southwest along NZ EEZ to: | | |
| 1 | NW Challenger | 38 15.1165S | 169 25.4025E |
| 1 | NW Challenger | 38 18.1585S | 169 21.0921E |
| 1 | NW Challenger | 38 23.154S | 169 14.3066E |
| 1 | NW Challenger | 38 23.1739S | 168 30.7782E |
| 1 | NW Challenger | 38 32.7132S | 168 30.776E |
| 1 | NW Challenger | 38 32.7422S | 167 57.9471E |
| 1 | NW Challenger | 39 17.1851S | 167 57.9471E |
| 1 | NW Challenger | 39 17.1851S | 167 30.4934E |
| 2 | N of New Zealand | 30 49.9311S | 172 42.88E |
| 2 | N of New Zealand | 30 40.1149S | 172 42.88E |
| 2 | N of New Zealand | 30 40.1149S | 172 53.2954E |
| 2 | N of New Zealand | 30 16.5038S | 172 53.2955E |

| | | | |
|---|-------------------------------------|-------------|--------------|
| 2 | N of New Zealand | 30 16.4804S | 174 19.9866E |
| 2 | N of New Zealand | 30 40.2454S | 174 20.1812E |
| 2 | N of New Zealand | 30 40.2454S | 174 0.407E |
| 2 | N of New Zealand | 30 53.6691S | 174 0.1051E |
| 2 | N of New Zealand | 30 53.6691S | 173 2.9258E |
| | East north east along NZ EEZ to: | | |
| 2 | N of New Zealand | 30 49.9311S | 172 42.88E |
| 3 | NN of New Zealand | 28 19.8533S | 175 19.5885E |
| 3 | NN of New Zealand | 27 59.1593S | 175 19.5885E |
| 3 | NN of New Zealand | 27 59.1509S | 175 40.3722E |
| 3 | NN of New Zealand | 28 19.7531S | 175 40.3722E |
| 3 | NN of New Zealand | 28 19.8533S | 175 19.5885E |
| 4 | Capel Bank | 25 59.6393S | 159 00.2861E |
| 4 | Capel Bank | 25 14.9494S | 159 00.2861E |
| 4 | Capel Bank | 25 14.9494S | 160 00.1935E |
| 4 | Capel Bank | 25 59.6393S | 159 59.9576E |
| 4 | Capel Bank | 25 59.6393S | 159 00.2861E |
| 5 | N. Lord Howe | 34 40.0884S | 162 19.5471E |
| 5 | N. Lord Howe | 33 55.4610S | 162 19.5471E |
| | North along Aus EEZ to: | | |
| 5 | N. Lord Howe | 32 39.8239S | 163 04.5520E |
| 5 | N. Lord Howe | 32 39.4772S | 163 39.9331E |
| 5 | N. Lord Howe | 33 19.9980S | 163 40.0020E |
| 5 | N. Lord Howe | 33 19.9980S | 163 19.9980E |
| 5 | N. Lord Howe | 34 40.0884S | 163 19.5943E |
| 5 | N. Lord Howe | 34 40.0884S | 162 19.5471E |
| 6 | S. Lord Howe | 36 00.0000S | 165 00.0000E |
| 6 | S. Lord Howe | 35 19.9980S | 165 00.0000E |
| 6 | S. Lord Howe | 35 20.2299S | 166 21.9843E |
| 6 | S. Lord Howe | 36 00.2299S | 166 21.9843E |
| 6 | S. Lord Howe | 36 00.0000S | 165 00.0000E |
| 7 | Gascoyne | 36 59.7805S | 155 53.6277E |
| 7 | Gascoyne | 36 20.2903S | 155 53.6277E |
| 7 | Gascoyne | 36 19.9468S | 156 43.7715E |
| 7 | Gascoyne | 36 59.4399S | 156 43.7715E |
| 7 | Gascoyne | 36 59.7805S | 155 53.6277E |

Annex 2: Provisional access

| Member or CNCP |
|----------------|
| Australia |
| New Zealand |

Annex 3: List of VME indicator taxa

| Taxonomic Level | Common Name | Qualifying taxa |
|----------------------------------|---------------|---|
| <i>Vulnerable taxa</i> | | |
| Phylum Porifera | Sponges | All taxa of the classes Demospongiae and Hexactinellidae |
| Phylum Cnidaria | | |
| Class Anthozoa | | |
| Order Scleractinia | Stony corals | All taxa within the following genera: <i>Solenosmilia</i> ; <i>Goniocorella</i> ; <i>Oculina</i> ; <i>Enallopsammia</i> ; <i>Madrepora</i> ; <i>Lophelia</i> |
| Order Antipatharia | Black corals | All taxa |
| Order Alcyonacea | Soft corals | All taxa |
| Order Gorgonacea | Sea fans | All taxa |
| Order Pennatulacea | Sea pens | All taxa |
| Class Hydrozoa | | |
| Order Anthoathecatae | | |
| Family | Hydrocorals | All taxa |
| Stylasteridae | | |
| <i>Habitat indicators</i> | | |
| Phylum Echinodermata | | |
| Class Asteroidea | | |
| Order Brisingida | Armless stars | All taxa |

Annex 4: Weight threshold for triggering VME encounter protocol

| Taxonomic Level | Common Name | Weight Threshold (kg) |
|------------------------|------------------------|-----------------------|
| Vulnerable taxa | | |
| Phylum Porifera | Sponges | 30 |
| Phylum Cnidaria | | |
| Class Anthozoa | | |
| Order Scleractinia | | 40 |
| Order Alcyonacea | Soft corals (all taxa) | 30 |
| Order Gorgonacea | Sea fans (all taxa) | 40 |

Annex 5: Guidelines for the preparation and submission of notifications of encounters with potential VMEs

| |
|---|
| 1. General Information: |
| a. Contact details |
| b. Nationality |
| c. Vessel name |
| d. Date of fishing effort and notification |
| e. Time of shot start (UTC) |
| f. Time of shot end (UTC) |
| g. Fishing gear used |
| 2. Location Information: |
| Bottom trawl or mid-water trawl |
| a. Start and end position of trawl (to nearest 0.01 decimal degree) |
| Bottom line |
| a. Position of line segment midpoint |
| 3. VME Information: |
| a. Summary information: |
| i. Number of VME Indicator taxa encountered |
| ii. Total weight of VME Indicator taxa encountered |
| b. Detailed information: |
| i. Weight of each VME Indicator taxa in tow (including any under threshold) |

Annex 6: Minimum observer coverage levels

| Gear type | Minimum level of observer coverage |
|---|---|
| Vessels using bottom trawl and mid-water trawl gear | 100% observer coverage |
| Bottom line gear | At least 10% observer coverage for the fishing year ¹² |

¹² Expressed as the percentage of the total number of observed hooks.