

9TH MEETING OF THE SPRFMO COMMISSION

Held virtually, 25 January – 2 February 2021

COMM 9 – Prop 02

Australia

<input checked="" type="checkbox"/> Amend <input type="checkbox"/> Create	CMM 03-2020 on Bottom Fishing
Submitted by: Australia	
<p>Summary of the proposal:</p> <p>As a responsible bottom fishing nation committed the United Nations General Assembly Sustainable Fisheries Resolutions, Australia submits this proposal to amend two key aspects of SPRFMO’s bottom fishing CMM.</p> <p>These changes:</p> <ol style="list-style-type: none"> 1) Amend the encounter protocol review process to expand the focus from assessing encounters above the prescribed Vulnerable Marine Ecosystem (VME) thresholds in the context of ‘expectedness’ against the habitat suitability modelling to whether or not encounters may indicate, or be evidence of, significant adverse impacts on VMEs. It also ensures that the Scientific Committee is not limited when providing advice and recommendations to the Commission on the considerations it can take into account. . Australia considers that, given the breadth of the uncertainties identified in the habitat suitability modelling, the Scientific Committee’s consideration of a VME encounter in the context of whether such an encounter was expected or not is unlikely to be a useful basis for the Commission to determine appropriate management action in the event of an encounter. 2) Decrease the VME thresholds for areas Northwest Challenger Bottom Fishing Management Areas and the Bottom Fishing Management Areas within the Central Louisville Fishery Management Area where the protection of suitable habitat for some VME taxa may be, or less likely to be, less favourable (see paragraph 73 of the SC8 Report) and protection is qualitatively poor for many taxa and that are estimated to contain significant amounts of VME habitat; necessitating more precautionary management arrangements for these areas. The proposed thresholds are based on the 98th percentile as drawn from SC6-DW09, with the exception of hexacorals as Australia does not have these data. <p>The footnote reference to the bottom fishery impact assessment standard has also been updated.</p>	
<p>Objective of the proposal:</p> <p>Australia is conscious that the Scientific Committee agreed that the cumulative bottom fishing impact assessment (BFIA) submitted jointly with New Zealand represents the best science available to the SC at the current time; provided a sound basis for formulating management advice to the Commission; meets international standards (such as the FAO Deep-Seas Guidelines) and complies with the SPRFMO BFIA Standard. The SPRFMO SC accordingly accepted the BFIA. In this respect, Australia considers there is a sound basis for the Commission to make a positive decision in accordance with paragraph 20(b) of CMM 2019-03.</p> <p>However, Australia acknowledges the complexity of the scientific advice to date and that the virtual meeting format constrains the Commission’s ability to undertake a meaningful review as paragraph 44 of CMM 2019-03 requires. We further acknowledge that there are other areas where protection may be inadequate, or where modelling may lead to optimistic or uncertain estimates of protection. Therefore, Australia considers that it is still essential to comprehensively review this measure. We recognize the interest of SPRFMO Members in this process and are committed to cooperation throughout 2021 to enable an informed review to be undertaken in 2022.</p>	
<p>Has the proposal financial impacts or influence on the Secretariat work? <input type="checkbox"/> Yes <input checked="" type="checkbox"/> No</p>	
<p>Ref: COMM9-PROP02</p>	<p>Received on: 6th December 2020</p>

CMM 03-2021

Conservation and Management Measure for the Management of Bottom Fishing in the SPRFMO Convention Area

(Supersedes CMM 03-2020)

The Commission of the South Pacific Regional Fisheries Management Organisation;

RECOGNISING Article 2 of the Convention on the Conservation and Management of High Seas Fishery Resources in the South Pacific Ocean (the Convention), which provides that the objective of the Convention is, through the application of the precautionary approach and an ecosystem approach to fisheries management, to ensure the long-term conservation and sustainable use of fishery resources and, in so doing, to safeguard the marine ecosystems in which these resources occur;

FURTHER RECOGNISING Articles 3(1)(a)(i) and (vii) of the Convention, which call on the Commission, in giving effect to the objective of the Convention, to adopt Conservation and Management Measures (CMMs) that take account of international best practices and protect marine ecosystems, particularly ecosystems with long recovery times following disturbance;

FURTHER RECOGNISING Articles 3(1)(b) and (2) of the Convention which call on the Commission to apply the precautionary approach and an ecosystem approach to the conservation and management of fishery resources under the mandate of the Convention;

FURTHER RECOGNISING Article 4 of the Convention in which Contracting Parties acknowledge their duty to cooperate to ensure compatibility of (CMMs) established for fishery resources that are identified as straddling areas under national jurisdiction and the adjacent high seas of the Convention Area;

MINDFUL of Article 31(1) of the Convention which calls on the Commission to cooperate with other regional fisheries management organisations (RFMOs), the Food and Agriculture Organization of the United Nations (FAO), other specialised agencies of the United Nations and other relevant organisations on issues of mutual interest;

RECALLING that in 2007, Participants in the International Consultations on the Establishment of the South Pacific RFMO adopted voluntary interim management measures, including *inter alia*, for the management of bottom fisheries in the Convention Area;

NOTING United Nations General Assembly (UNGA) Resolution 61/105 which calls upon RFMOs to assess, on the basis of the best available scientific information, whether individual bottom fishing activities would have significant adverse impacts on vulnerable marine ecosystems (VMEs), and to ensure that if it is assessed that these activities would have significant adverse impacts, they are managed to prevent such impacts, or not authorised to proceed;

FURTHER NOTING UNGA Resolution 64/72 which calls upon RFMOs to establish and implement appropriate protocols for the implementation of UNGA Resolution 61/105, including definitions of what constitutes evidence of an encounter with a VME, in particular threshold levels and indicator species; and to implement the FAO International Guidelines for the Management of Deep-sea Fisheries in the High Seas (FAO, 2009; FAO Deep-sea Fisheries Guidelines) in order to sustainably manage fish stocks and protect VMEs;

FURTHER NOTING UNGA Resolution 66/68 which encourages RFMOs to consider the results available from marine scientific research, including those obtained from seabed mapping programmes concerning the identification of areas containing VMEs, and to adopt CMMs to prevent significant adverse impacts from bottom fishing on such ecosystems, consistent with the FAO Deep-sea Fisheries Guidelines, or to close such areas to bottom fishing until such CMMs are adopted, as well as to continue to undertake further marine scientific research, in accordance with international law as reflected in Part XIII of the 1982 Convention;



FURTHER NOTING UNGA Resolutions 71/123 and 72/72 which call upon RFMOs to use the full set of criteria in the FAO Deep-sea Fisheries Guidelines to identify where VMEs occur or are likely to occur as well as for assessing significant adverse impacts, to ensure that impact assessments, including for cumulative impacts of activities covered by the assessment, are conducted consistent with the FAO Deep-sea Fisheries Guidelines, are reviewed periodically and are revised whenever a substantial change in the fishery has occurred or there is relevant new information, and that, where such impact assessments have not been undertaken, they are carried out as a priority before authorising bottom fishing activities, and to ensure that CMMs are based on and updated on the basis of the best available scientific information, noting in particular the need to improve effective implementation of thresholds and move-on rules;

BEARING IN MIND the description in the FAO Deep-sea Fisheries Guidelines of what constitutes significant adverse impacts, factors to be considered when determining the scale and significance of an impact, what constitutes temporary impacts and factors to be considered in determining whether an impact is temporary;

REAFFIRMING the steps already taken by the Commission to address the impacts of large-scale pelagic driftnets and all deepwater gillnets in the Convention Area, through the implementation of CMM 08-2019 (Gillnetting);

RECOGNISING Articles 20(1)(a) and (d) of the Convention, which provide that the CMMs adopted by the Commission shall include measures to ensure the long-term sustainability of fishery resources and promote the objective of their responsible utilisation, and to protect the habitats and marine ecosystems in which fishery resources and non-target and associated or dependent species occur from the impacts of fishing, including measures to prevent significant adverse impacts on VMEs and precautionary measures where it cannot adequately be determined whether VMEs are present or whether fishing would cause significant adverse impacts on VMEs;

FURTHER RECOGNISING Article 22 of the Convention, which provides that a fishery that has not been subject to fishing or has not been subject to fishing with a particular gear type or technique for ten years or more shall be opened only when the Commission has adopted cautious preliminary CMMs in respect of that fishery, and, as appropriate, non-target and associated or dependent species, and appropriate measures to protect the marine ecosystem in which that fishery occurs from adverse impacts of fishing activities;

ADOPTS the following CMM in accordance with Articles 8, 20, 21 and 22 of the Convention:

Objective

1. The objective of the CMM together with CMM 03a-2020 (Deepwater Species) is, through the application of the precautionary approach and an ecosystem approach to fisheries management, to ensure the long-term conservation and sustainable use of deep sea fishery resources, including target fish stocks as well as non-target or associated and dependent species, and, in doing so, to safeguard the marine ecosystems in which these resources occur, including *inter alia* the prevention of significant adverse impacts on vulnerable marine ecosystems.

Definitions

2. For the purposes of this CMM, the term “bottom fishing” is defined as fishing using any gear type likely to come in contact with the seafloor or benthic organisms during the normal course of operations, and includes:
 - a) “Bottom trawl” which is defined as fishing using a trawl net that is designed to be pulled through the



water and to come into contact with the seabed;

- b) “Mid-water trawl” which is defined as fishing for benthic-pelagic species using a trawl net that is designed to be pulled through the water near the seabed and designed not to come into extended contact with the seabed;
 - c) “Bottom line” which is defined as fishing using a line to which a hook or hooks (whether baited or not) are attached and rigged to sink and fish on or near the seabed. This includes, but is not limited to, longlines, hand lines, drop lines, trot lines, and dahn lines.
3. For the purposes of this CMM, the term “vulnerable marine ecosystem” (VME) means a marine ecosystem that has the characteristics referred to in paragraph 42 of, and elaborated in the Annex to, the FAO Deep-sea Fisheries Guidelines.
 4. For the purposes of this CMM, the term “Evaluated Area” means those parts of the Convention Area that are within the area starting at a point of 24°S latitude and 146°W, extending southward to latitude 57° 30S, then eastward to 150°E longitude, northward to 55°S, eastward to 143°E, northward to 24°S and eastward back to point of origin (Annex 1).
 5. For the purposes of this CMM, the term “Management Area(s)” means those parts of the Evaluated Area specified in paragraph 13.
 6. For the purposes of this CMM, the term “fishing year” means the period starting 0001 hours UTC on 1 January and ending 2359 hours on 31 December in the same year.

General Provisions

7. This CMM applies to the entire Convention Area.
8. This CMM together with CMM 03a-2021 (Deepwater Species) are adopted as cautious preliminary CMMs consistent with Article 22(1) of the Convention.
9. This CMM together with CMM 03a-2021 (Deepwater Species) applies to all fishing vessels flying the flag of a Member or Cooperating non-Contracting Party (CNCP) to the South Pacific Regional Fisheries Management Organisation (SPRFMO) engaging or intending to engage in bottom fishing in the Convention Area.
10. Members and CNCPs shall prohibit vessels flying their flag from participating in bottom fishing in the Convention Area other than in accordance with the provisions of this CMM together with CMM 03a-2021 (Deepwater Species).
11. Only fishing vessels duly authorised pursuant to Article 25 of the Convention and in accordance with CMM 05-2019 (Record of Vessels) that are flagged to Members and CNCPs shall participate in bottom fishing in the Convention Area.
12. No Member or CNCP shall authorise vessels flying their flag to engage in any bottom fishing in the Convention Area unless:
 - a) Authorisation has been given by the Commission under paragraph 20(d)(i); or
 - b) paragraph 21 applies to the Member or CNCP; or
 - c) approval has been given by the Commission under paragraph 12 of CMM 13-2020 (Exploratory Fisheries).



Bottom Fishing Management Areas

13. The Commission hereby establishes within the Evaluated Area the following Management Areas, the coordinates for which are provided in Annex 4:
- Bottom trawl Management Area
 - Mid-water trawl Management Area
 - Bottom line Management Area
14. Bottom fishing in the Convention Area shall occur only in the three Management Areas established in paragraph 13 and in accordance with the terms of this CMM together with CMM 03a-2020 (Deepwater Species). CMM 13-2020 (Exploratory Fisheries) does not apply to bottom fishing in the three Management Areas established in paragraph 13.
15. Notwithstanding paragraphs 10 and 14, proposals to undertake bottom fishing:
- outside a Management Area; or
 - inside a Management Area using bottom fishing methods other than bottom trawl, midwater trawl or bottom line fishing; or
 - in a mid-water trawl Management Area using bottom trawl gear or in a bottom line Management Area using bottom trawl or mid-water trawl gear; or
 - inside a Management Area targeting species not previously targeted in the area proposed to be fished (unless the species has regularly been caught as part of an existing fishery);
- shall be handled in accordance with CMM 13-2020 (Exploratory Fisheries).
16. Unless a Member or CNCP is fishing in an exploratory fishery established pursuant to CMM 13-2020 (Exploratory Fisheries), Members and CNCPs shall ensure that vessels flying their flag comply with the following provisions:
- Bottom trawling shall only occur in a bottom trawl Management Area;
 - Midwater trawling shall only occur in a midwater trawl Management Area or a bottom trawl Management Area;
 - Bottom lining shall only occur in a Management Area.
17. The Commission may in future establish, disestablish, or adjust the boundaries of the Evaluated Area or any Management Area, based on advice from the Scientific Committee.

Marine Mammals, Seabirds, Reptiles and Other Species of Concern¹

18. Members and CNCPs shall require vessels flying their flag and undertaking bottom fishing to implement seabird mitigation measures in accordance with CMM 09-2017 (Seabirds), and shall report annually to the Commission on bycatch rates and total bycatch estimates in accordance with CMM 02-2020 (Data Standards) and the Guidelines for Annual National Reports to the SPRFMO Scientific Committee.
19. The Scientific Committee shall provide advice biennially to the Commission on:
- direct and indirect interactions between bottom fishing and marine mammals, seabirds, reptiles and other species of concern;

¹ "Other species of concern" means the list contained in Annex 14 of CMM 02-2020 (Data standards).



- b) any recommended spatial or temporal closures or spatially/temporally limited gear prohibitions for any identified hotspots of these species; and
- c) any recommended bycatch limits and/or measures for an encounter protocol for any of these species.

Assessment of Proposed Bottom Fishing

20. Subject to paragraphs 15 and 21, all proposals to undertake bottom fishing in one of the Management Areas established in paragraph 13 shall be subject to an assessment process, based on the best available scientific information and taking into account the history of bottom fishing in the areas proposed and cumulative impacts of past and proposed fishing. The assessment will determine if such fishing would contribute to having significant adverse impacts on VMEs, and to ensure that if it is determined that this fishing would make such contributions, that they are managed to prevent such impacts or not authorised to proceed. The assessments shall follow the following procedures:

- a) Each Member or CNCP proposing to participate in bottom fishing activities shall submit to the Scientific Committee a proposed assessment that meets the SPRFMO Bottom Fishery Impact Assessment Standard (SPRFMO BFIAS²) with the best available data including consideration of cumulative impacts, not less than 60 days prior to the annual meeting of the Scientific Committee. These submissions shall also include the mitigation measures proposed by the Member or CNCP to prevent such impacts.
- b) The Scientific Committee shall undertake a review of the proposed assessment and provide advice to the Commission on:
 - i. whether the proposed bottom fishing would contribute to having significant adverse impacts on deep sea fish stocks for which no stock assessment has been completed, bycatch species and/or VMEs and, if so,
 - ii. whether any proposed or additional mitigation measures would prevent such impacts.
- c) In its review of the proposed assessment, the Scientific Committee may use additional information available to it, including information from other fisheries in the region or similar fisheries elsewhere. The Scientific Committee is not obliged to consider, or provide advice on, proposed assessments provided after the deadline for submission of proposed assessments contained in paragraph 20(a).
- d) On the basis of the Scientific Committee's review of the submitted assessment, taking into account any recommendations and advice of the Scientific Committee and in line with the precautionary approach, the Commission shall:
 - i. consider whether, and if applicable the extent to which, bottom fishing in the Management Area(s) for which the proposed assessment was conducted should be authorised;
 - ii. which, if any, additional measures to those proposed are required pursuant to Article 20 to prevent significant adverse impacts on VMEs;
 - iii. which, if any, additional precautionary measures are required where it cannot adequately be determined whether VMEs are present or whether fishing could cause significant adverse impacts on VMEs; and

² Updated in 2019, available at: <https://www.sprfmo.int/assets/Fisheries/Science/SPRFMO-Bottom-Fishery-Impact-Assessment-Standard-2019.pdf>



- iv. in relation to an application to target a species for which no total catch limit exists, consider an exemption for such a Member or CNCP to paragraph 10 of CMM 03a-2020 (Deepwater Species), bearing in mind the need to be precautionary.
21. Subject to paragraph 22, Members or CNCPs that engaged in bottom fishing in the Convention Area consistently with CMM 03-2018, CMM 03-2017, CMM 4.03 or CMM 2.03 do not need to submit the proposed assessment otherwise required in paragraph 20(a) for the 2019 and 2020 fishing season.
22. Members and CNCPs whose bottom fishing proposal has been authorised by the Commission under paragraph 20(d)(i) or to whom paragraph 21 applies shall ensure that a proposed assessment meeting the requirements contained in paragraph 20(a) is submitted to the Scientific Committee and Commission at least every 3 years, and also when a substantial change in the fishery has occurred such that it is likely that the risk or impact of the fishery may have changed.
23. The Secretariat shall make publicly available on the SPRFMO website all submitted assessments as well as the Scientific Committee's review of such assessments in accordance with its usual procedures, and shall invite public comment on assessments.
24. The Scientific Committee shall review, and update if required, the SPRFMO BFIAS every 5 years, starting 2025, to ensure that it reflects, as appropriate, best practice.
25. Members and CNCPs who are engaged in fishing pursuant to paragraph 21 are required to submit a revised Bottom Fishing Impact Assessment to the Scientific Committee no later than its annual meeting in 2020 according to the procedure in paragraph 20.

Encounters with Potential VMEs

26. For the purposes of this section of the CMM, the term "VME indicator taxa" means any benthic organism listed in Annex 5.
27. For the purposes of this section of the CMM, the term "Encounter" means catch of a VME indicator taxa above threshold levels as set out in paragraph 28.
28. Where VME indicator taxa are encountered in any one tow at or above the threshold limits in Annex 6A, or three or more different VME indicator taxa at or above the weight limits in Annex 6B, Members and CNCPs shall require any vessel flying their flag to:
 - a) cease bottom fishing immediately within an encounter area of one (1) nautical mile either side of the trawl track extended by one (1) nautical mile at each end;
 - b) report the encounter immediately to the Member or CNCP whose flag the vessel is flying and the Secretariat, in accordance with the Guidelines for the preparation and submission of notifications of encounters with potential VMEs, contained in Annex 7.
29. In the event of an encounter, Members and CNCPs shall cooperate to the extent possible with the Secretariat and other Members or CNCPs engaged in bottom fishing to exchange such data and information as may be relevant to the Scientific Committee's consideration of the encounter area.
30. On receipt of a notification under paragraph 28(b) the Secretariat shall:
 - a) record the location of the encounter area; and
 - b) within three (3) working days of receipt, notify all flag States with fishing vessels participating in bottom fishing in the Convention Area that bottom fishing is suspended in the encounter area in paragraph 28(a).
31. Members and CNCPs shall ensure that vessels flying their flags do not bottom fish in an encounter area notified under paragraph 30(b) unless and until such time as the Commission determines management



actions under paragraph 34 that would permit the resumption of bottom fishing in the area.

32. Members and CNCPs shall submit to the Scientific Committee a detailed description of each encounter by vessels flying their flag that resulted in a temporary suspension pursuant to paragraph 28, a comparison of the encounter with the existing model prediction, and suggested management actions to prevent significant adverse impacts on VMEs³.
33. The Scientific Committee, at its next annual meeting, shall review all encounters reported pursuant to paragraph 28(b), and provide advice on management actions proposed by the relevant Member or CNCP under paragraph 32 and any other management actions the Scientific Committee considers appropriate. This review should include consideration of:
 - a) the detailed analyses provided by a Member or CNCP pursuant to paragraph 32;
 - b) historical fishing events within 5nm of the encounter tow, in particular, any previous encounters, and all information on benthic bycatch;
 - c) model predictions for all VME indicator taxa and the extent to which encounters are consistent or inconsistent with model predictions;
 - d) details of the relevant fishing activity, including the bioregion; and
 - e) any other information the Scientific Committee considers relevant.
34. Taking into account the Scientific Committee's review of each encounter and its advice on management actions, at its next annual meeting, the Commission shall determine management actions for each encounter area. Management actions determined by the Commission will apply as appropriate, unless otherwise determined, from the conclusion of the relevant Commission meeting.
35. Members and CNCPs shall submit to the Secretariat annual reports of all benthic bycatch data from vessels flying their flag, consistent with CMM 02-2020 (Data Standards), as part of their annual reports to the Scientific Committee, to enable an ongoing review of the effectiveness of the spatial management arrangements. By no later than its annual meeting in 2021, the Scientific Committee shall develop a review process to provide for ongoing monitoring and feedback.
36. At its annual meeting in 2021, the Scientific Committee shall review and provide advice on the effectiveness of the applied management measures, including:
 - a) VME indicator thresholds for all areas;
 - b) the boundaries of Management Areas;
 - c) the number of encounters;
 - d) the relationship between benthic bycatch from fishing vessels (including encounter events) and the habitat suitability models;
 - e) the appropriateness of the management approach (e.g. scale);
 - f) additional relevant VME indicator taxa or species that have not been modelled, assessed or for which thresholds have not been established;
 - g) refinement of the encounter protocol;
 - h) measures to prevent the catch of and/or impacts on rare species; and
 - i) anything else the SC considers relevantto ensure the measure is achieving its objective and the objectives of the Convention.
37. From 2021, the Scientific Committee shall review all available data and provide advice on the ongoing appropriateness of the management measures in this CMM to ensure the measure is able to achieve its objective and the objectives of the Convention.

³ Relevant outputs from habitat suitability models (e.g. shapefiles of predicted distributions) will be made available to Members.



38. Nothing in this CMM shall prevent Members or CNCPs from taking additional measures compatible with this measure in relation to encounters with VME indicator taxa below the threshold in paragraph 28.

Monitoring and Control of Bottom Fishing Activities

39. Members and CNCPs shall:

- a) ensure that vessels that fly their flag and participate in bottom fishing:
 - i. are equipped and configured so that they can comply with all relevant SPRFMO CMMs;
 - ii. act in accordance with CMM 06-2020 (Commission VMS), polling once every 30 minutes for the duration of the trip;⁴
 - iii. report tow or set start and end position to 1/100th degree resolution - decimal format, notwithstanding the Annexes of CMM 02-2020 (Data standards).
- b) only authorise vessels flying their flag to fish in the Convention Area where they are able to exercise their responsibilities as a flag State under the Convention and all relevant SPRFMO CMMs;
- c) ensure that they meet the level of observer coverage specified in this CMM to collect data in accordance with this and other CMMs;
- d) prohibit vessels flying their flag from participating in bottom fishing if the agreed minimum required data submissions have not been provided in accordance with the agreed subset of the vessel identification data requirements;
- e) in respect of each vessel that flies their flag and participates in bottom fishing, submit VMS reports to the Secretariat in accordance with CMM 06-2020 (Commission VMS).

Observer Coverage

40. All Members and CNCPs participating in bottom fishing pursuant to this CMM shall ensure scientific observer coverage of trips for vessels flying their flag consistent with the minimum observer coverage levels set out in Annex 8 and shall ensure that such observers collect and report data as described in CMM 02-2020 (Data Standards).
41. The Commission shall review the appropriateness of the minimum observer coverage levels specified in Annex 8 of this CMM at its annual meeting in 2021, taking into account the bottom fishing impact assessment prepared pursuant to paragraph 25 and the SC advice and recommendations therein.
42. Nothing in this measure shall affect the rights of Members and CNCPs to apply higher levels of observer coverage than set out in Annex 8, in accordance with their domestic requirements.

Electronic Monitoring

43. Members and CNCPs may also require vessels flying their flag to have an electronic monitoring system installed and operating that is capable of recording (including visually) and storing recordings of fishing events for data collection and verification purposes.

Review

44. The Commission shall review this CMM in 2021 and at least every 3 years thereafter, and in doing so, take

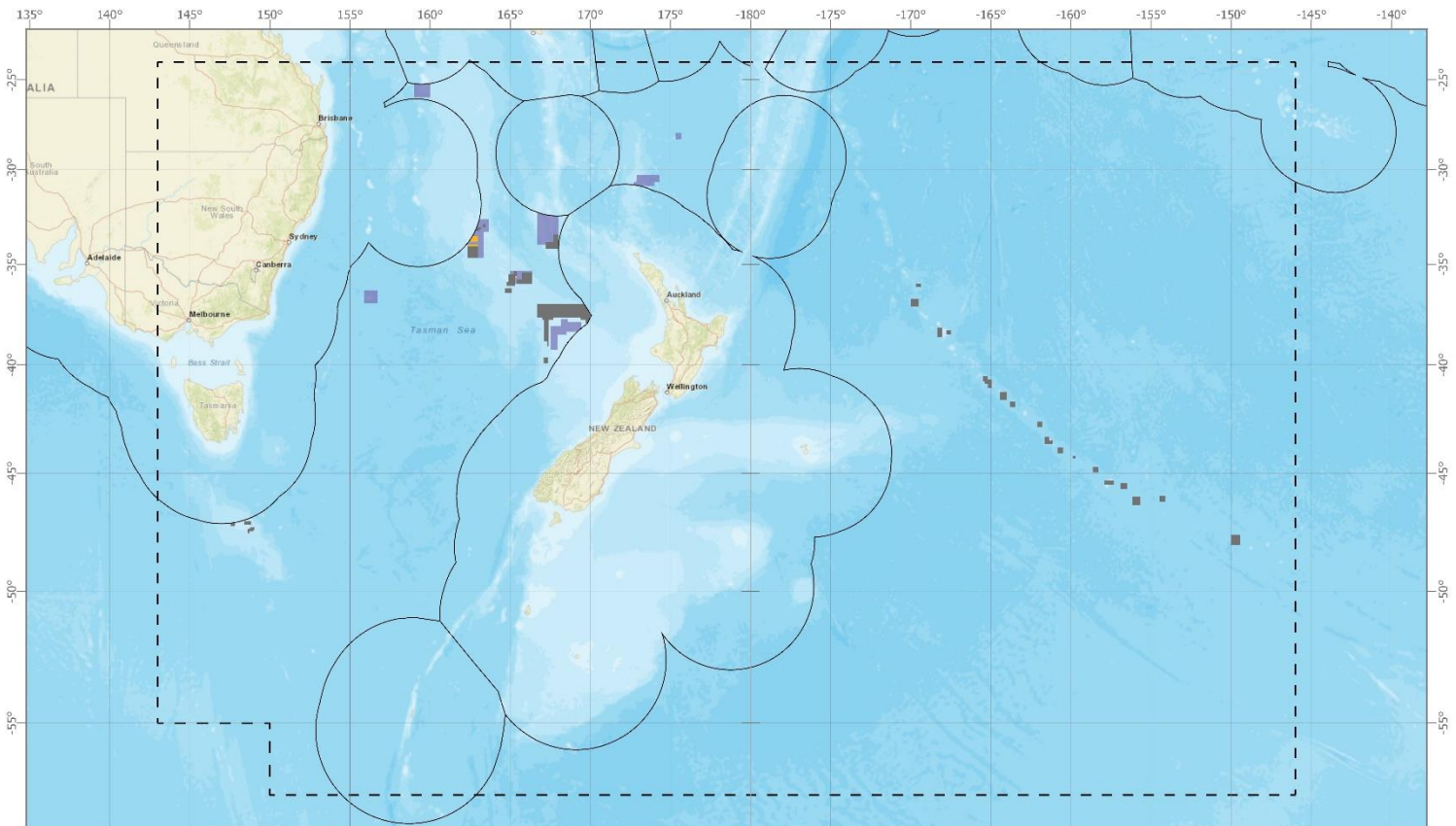
⁴ This obligation shall apply to all trips in which the vessel departs port with the intention of entering the Convention Area. The term "duration of the trip" commences from the time the vessel departs from port, includes all times that it is in the Convention Area and concludes once it enters port.



appropriate action to meet the objectives of this CMM and the Convention, in view of the advice and recommendations of the Scientific Committee. Each such review shall consider the protocol for encounters with VME indicator taxa and the appropriateness of applied management measures.



ANNEX 1: SPRFMO Bottom Fishing Evaluated Area and Bottom Fishing Management Areas



SPRFMO Management Areas: Overview

Date: 18/02/2019
Produced by: Spatial Intelligence
Reference: r180300
Coordinate System: Mercator 41

- Bottom Trawl (Also allowed: Mid-water Trawl & Bottom Line)
- Mid-water Trawl (Also allowed: Bottom Line)
- Bottom Line Only
- Exclusive Economic Zones
- Evaluated Area

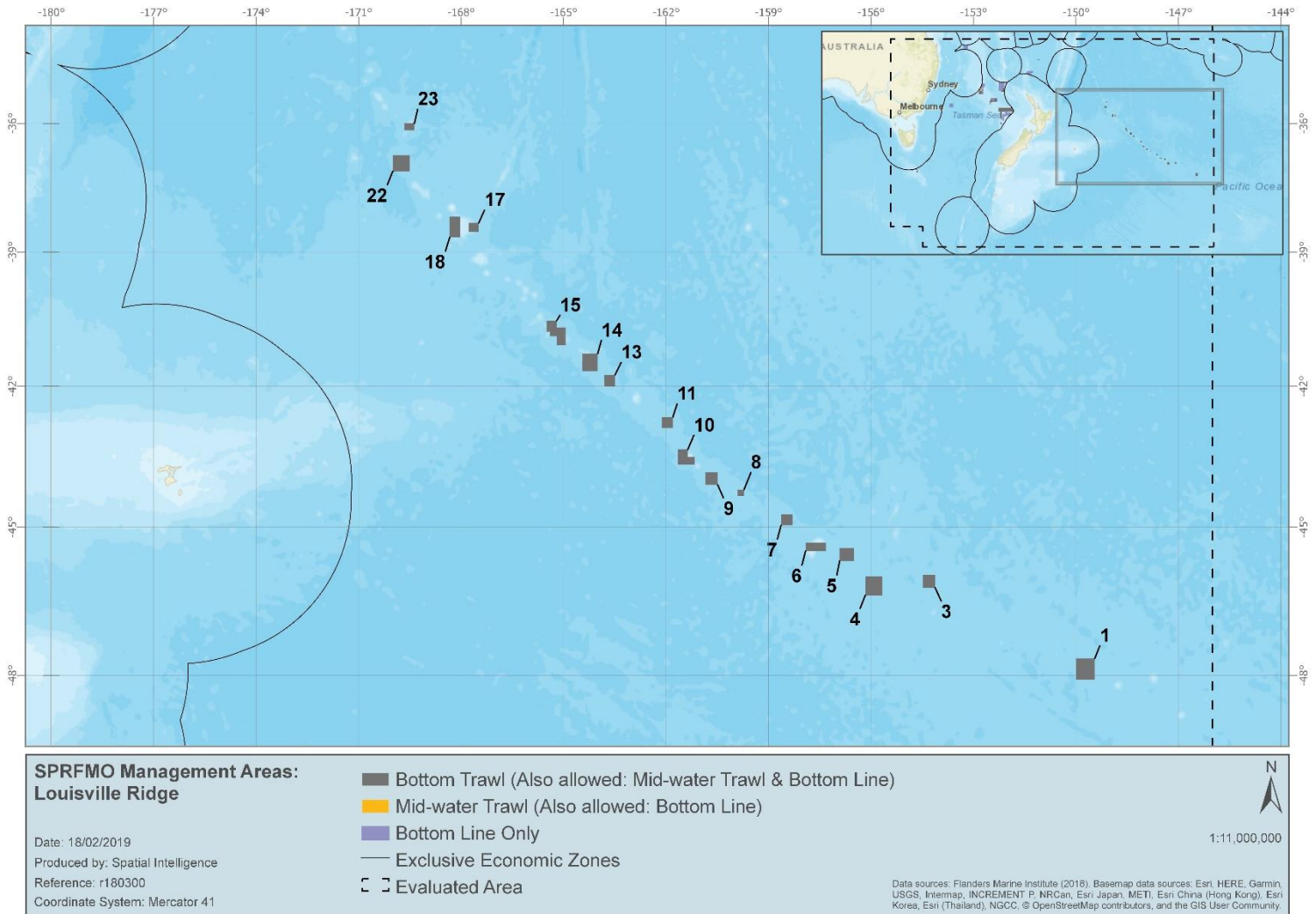


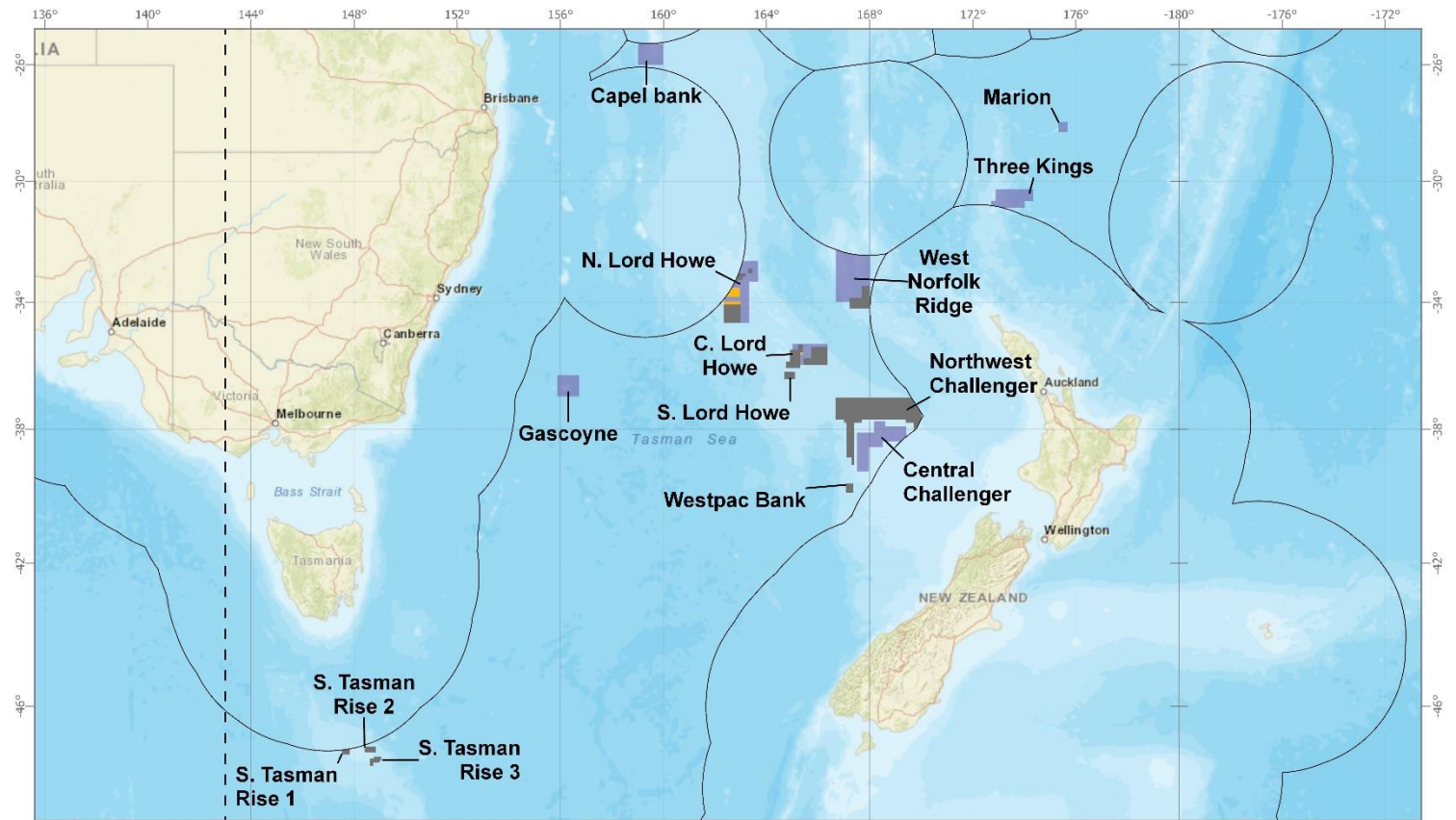
1:26,000,000

Data sources: Flinders Marine Institute (2018). Basemap data sources: Esri, HERE, Garmin, USGS, Intermap, INCREMENT P, NRCan, Esri Japan, METI, Esri China (Hong Kong), Esri Korea, Esri (Thailand), NGCC, © OpenStreetMap contributors, and the GIS User Community.



ANNEX 2: SPRFMO Bottom Fishing Management Areas for the Louisville Ridge





**SPRFMO Management Areas:
Tasman Sea**

- Bottom Trawl (Also allowed: Mid-water Trawl & Bottom Line)
- Mid-water Trawl (Also allowed: Bottom Line)
- Bottom Line Only
- Exclusive Economic Zones
- Evaluated Area

Date: 18/02/2019
Produced by: Spatial Intelligence
Reference: r180300
Coordinate System: Mercator 41

N
1:16,000,000

Data sources: Flanders Marine Institute (2018). Basemap data sources: Esri, HERE, Garmin, USGS, Intermap, INCREMENT P, NRCan, Esri Japan, METI, Esri China (Hong Kong), Esri Korea, Esri (Thailand), NGCC, © OpenStreetMap contributors, and the GIS User Community

ANNEX 3: SPRFMO Bottom Fishing Management Areas for the Tasman Sea



ANNEX 4: Coordinates for Each Bottom Fishing Management Area⁵

a) Bottom Trawl Management Area coordinates

Block Name	Locality	Method	Latitude	Longitude	EEZ Direction
S. Lord Howe – West	C. Lord Howe	Bottom trawl	35°21.000'S	165°13.553'E	
S. Lord Howe – West	C. Lord Howe	Bottom trawl	35°21.000'S	165°24.000'E	
S. Lord Howe – West	C. Lord Howe	Bottom trawl	35°36.000'S	165°24.000'E	
S. Lord Howe – West	C. Lord Howe	Bottom trawl	35°36.000'S	165°18.000'E	
S. Lord Howe – West	C. Lord Howe	Bottom trawl	36°06.000'S	165°18.000'E	
S. Lord Howe – West	C. Lord Howe	Bottom trawl	36°06.000'S	164°46.000'E	
S. Lord Howe – West	C. Lord Howe	Bottom trawl	35°54.000'S	164°46.000'E	
S. Lord Howe – West	C. Lord Howe	Bottom trawl	35°54.000'S	164°54.000'E	
S. Lord Howe – West	C. Lord Howe	Bottom trawl	35°31.000'S	165°54.000'E	
S. Lord Howe – West	C. Lord Howe	Bottom trawl	35°31.000'S	165°13.550'E	
S. Lord Howe – East	C. Lord Howe	Bottom trawl	35°26.000'S	165°44.000'E	
S. Lord Howe - East	C. Lord Howe	Bottom trawl	35°26.000'S	166°21.915'E	
S. Lord Howe - East	C. Lord Howe	Bottom trawl	35°47.000'S	165°26.000'E	
S. Lord Howe - East	C. Lord Howe	Bottom trawl	35°47.000'S	165°44.000'E	
S. Lord Howe - East	C. Lord Howe	Bottom trawl	36°00.500'S	165°26.000'E	
S. Lord Howe - East	C. Lord Howe	Bottom trawl	36°00.500'S	166°21.915'E	
01	Louisville	Bottom trawl	47°40.000'S	149°27.000'W	
01	Louisville	Bottom trawl	47°40.000'S	150°00.000'W	
01	Louisville	Bottom trawl	48°05.000'S	149°27.000'W	
01	Louisville	Bottom trawl	48°05.000'S	150°00.000'W	
03	Louisville	Bottom trawl	45°59.000'S	154°07.224'W	
03	Louisville	Bottom trawl	45°59.000'S	154°28.653'W	
03	Louisville	Bottom trawl	46°15.000'S	154°07.224'W	
03	Louisville	Bottom trawl	46°15.000'S	154°28.653'W	

⁵ For the avoidance of doubt, no Management Area shall include any area under within the exclusive economic zone of a Member, CNCP or non-Member.



Block Name	Locality	Method	Latitude	Longitude	EEZ Direction
04	Louisville	Bottom trawl	46°01.000'S	155°40.000'W	
04	Louisville	Bottom trawl	46°01.000'S	156°10.000'W	
04	Louisville	Bottom trawl	46°24.000'S	155°40.000'W	
04	Louisville	Bottom trawl	46°24.000'S	156°10.000'W	
05	Louisville	Bottom trawl	45°26.000'S	156°30.000'W	
05	Louisville	Bottom trawl	45°26.000'S	156°55.000'W	
05	Louisville	Bottom trawl	45°42.000'S	156°30.000'W	
05	Louisville	Bottom trawl	45°42.000'S	156°55.000'W	
06	Louisville	Bottom trawl	45°19.500'S	157°19.000'W	
06	Louisville	Bottom trawl	45°19.500'S	157°55.000'W	
06	Louisville	Bottom trawl	45°30.000'S	157°19.000'W	
06	Louisville	Bottom trawl	45°30.000'S	157°55.000'W	
07	Louisville	Bottom trawl	44°43.950'S	158°18.000'W	
07	Louisville	Bottom trawl	44°43.950'S	158°38.000'W	
07	Louisville	Bottom trawl	44°57.950'S	158°18.000'W	
07	Louisville	Bottom trawl	44°57.950'S	158°38.000'W	
08	Louisville	Bottom trawl	44°13.000'S	159°43.000'W	
08	Louisville	Bottom trawl	44°13.000'S	159°54.000'W	
08	Louisville	Bottom trawl	44°21.000'S	159°43.000'W	
08	Louisville	Bottom trawl	44°21.000'S	159°54.000'W	
09	Louisville	Bottom trawl	43°51.183'S	160°29.235'W	
09	Louisville	Bottom trawl	43°51.183'S	160°50.820'W	
09	Louisville	Bottom trawl	44°07.000'S	160°29.235'W	
09	Louisville	Bottom trawl	44°07.000'S	160°50.820'W	
10	Louisville	Bottom trawl	43°22.000'S	161°21.770'W	
10	Louisville	Bottom trawl	43°22.000'S	161°39.000'W	
10	Louisville	Bottom trawl	43°31.370'S	161°10.170'W	
10	Louisville	Bottom trawl	43°31.370'S	161°21.770'W	
10	Louisville	Bottom trawl	43°41.440'S	161°10.170'W	



Block Name	Locality	Method	Latitude	Longitude	EEZ Direction
10	Louisville	Bottom trawl	43°41.440'S	161°39.000'W	
11	Louisville	Bottom trawl	42°40.000'S	161°48.000'W	
11	Louisville	Bottom trawl	42°40.000'S	162°07.000'W	
11	Louisville	Bottom trawl	42°54.500'S	161°48.000'W	
11	Louisville	Bottom trawl	42°54.500'S	162°07.000'W	
13	Louisville	Bottom trawl	41°45.000'S	163°29.500'W	
13	Louisville	Bottom trawl	41°45.000'S	163°49.000'W	
13	Louisville	Bottom trawl	42°00.000'S	163°29.500'W	
13	Louisville	Bottom trawl	42°00.000'S	163°49.000'W	
14	Louisville	Bottom trawl	41°17.000'S	164°00.000'W	
14	Louisville	Bottom trawl	41°17.000'S	164°27.000'W	
14	Louisville	Bottom trawl	41°40.000'S	164°00.000'W	
14	Louisville	Bottom trawl	41°40.000'S	164°27.000'W	
15	Louisville	Bottom trawl	40°32.897'S	165°12.000'W	
15	Louisville	Bottom trawl	40°32.897'S	165°30.000'W	
15	Louisville	Bottom trawl	40°42.000'S	164°56.400'W	
15	Louisville	Bottom trawl	40°42.000'S	165°12.000'W	
15	Louisville	Bottom trawl	40°48.000'S	165°24.000'W	
15	Louisville	Bottom trawl	40°48.000'S	165°30.000'W	
15	Louisville	Bottom trawl	40°54.000'S	165°12.000'W	
15	Louisville	Bottom trawl	40°54.000'S	165°24.000'W	
15	Louisville	Bottom trawl	41°06.000'S	164°56.400'W	
15	Louisville	Bottom trawl	41°06.000'S	165°12.000'W	
17	Louisville	Bottom trawl	38°20.013'S	167°29.000'W	
17	Louisville	Bottom trawl	38°20.013'S	167°47.067'W	
17	Louisville	Bottom trawl	38°32.000'S	167°29.000'W	
17	Louisville	Bottom trawl	38°32.000'S	167°47.067'W	
18	Louisville	Bottom trawl	38°11.013'S	168°01.785'W	
18	Louisville	Bottom trawl	38°11.013'S	168°20.000'W	



Block Name	Locality	Method	Latitude	Longitude	EEZ Direction
18	Louisville	Bottom trawl	38°40.000'S	168°01.785'W	
18	Louisville	Bottom trawl	38°40.000'S	168°20.000'W	
22	Louisville	Bottom trawl	36°45.000'S	169°30.000'W	
22	Louisville	Bottom trawl	36°45.000'S	170°00.000'W	
22	Louisville	Bottom trawl	37°08.000'S	169°30.000'W	
22	Louisville	Bottom trawl	37°08.000'S	170°00.000'W	
23	Louisville	Bottom trawl	36°00.000'S	169°22.000'W	
23	Louisville	Bottom trawl	36°00.000'S	169°40.000'W	
23	Louisville	Bottom trawl	36°10.000'S	169°22.000'W	
23	Louisville	Bottom trawl	36°10.000'S	169°40.000'W	
N. Lord Howe - South	N. Lord Howe	Bottom trawl	34°04.035'S	162°20.000'E	
N. Lord Howe - South	N. Lord Howe	Bottom trawl	34°04.035'S	163°00.000'E	
N. Lord Howe - South	N. Lord Howe	Bottom trawl	34°40.000'S	162°20.000'E	
N. Lord Howe - South	N. Lord Howe	Bottom trawl	34°40.000'S	163°00.000'E	
N. Lord Howe - East	N. Lord Howe	Bottom trawl	32°54.650'S	163°16.615'E	
N. Lord Howe - East	N. Lord Howe	Bottom trawl	32°54.650'S	163°26.380'E	
N. Lord Howe - East	N. Lord Howe	Bottom trawl	33°04.400'S	163°16.615'E	
N. Lord Howe - East	N. Lord Howe	Bottom trawl	33°04.400'S	163°26.380'E	
N. Lord Howe - West	N. Lord Howe	Bottom trawl	33°16.400'S	162°52.540'E	
N. Lord Howe - West	N. Lord Howe	Bottom trawl	33°09.296'S	162°52.540'E	North-east along the Australian EEZ
N. Lord Howe - West	N. Lord Howe	Bottom trawl	33°04.400'S	162°54.941'E	
N. Lord Howe - West	N. Lord Howe	Bottom trawl	33°04.400'S	163°10.540'E	
N. Lord Howe - West	N. Lord Howe	Bottom trawl	33°10.400'S	163°10.540'E	
N. Lord Howe - West	N. Lord Howe	Bottom trawl	33°10.400'S	163°04.540'E	
N. Lord Howe - West	N. Lord Howe	Bottom trawl	33°16.400'S	163°04.540'E	
Northwest Challenger	Northwest Challenger	Bottom trawl	38°00.000'S	169°47.848'E	
Northwest Challenger	Northwest Challenger	Bottom trawl	38°00.000'S	169°42.000'E	



Block Name	Locality	Method	Latitude	Longitude	EEZ Direction
Northwest Challenger	Northwest Challenger	Bottom trawl	37°48.000'S	169°42.000'E	
Northwest Challenger	Northwest Challenger	Bottom trawl	37°48.000'S	169°24.000'E	
Northwest Challenger	Northwest Challenger	Bottom trawl	37°42.000'S	169°24.000'E	
Northwest Challenger	Northwest Challenger	Bottom trawl	37°42.000'S	167°42.000'E	
Northwest Challenger	Northwest Challenger	Bottom trawl	37°48.000'S	167°42.000'E	
Northwest Challenger	Northwest Challenger	Bottom trawl	37°48.000'S	167°24.000'E	
Northwest Challenger	Northwest Challenger	Bottom trawl	39°06.000'S	167°24.000'E	
Northwest Challenger	Northwest Challenger	Bottom trawl	39°06.000'S	167°18.000'E	
Northwest Challenger	Northwest Challenger	Bottom trawl	38°52.000'S	167°18.000'E	
Northwest Challenger	Northwest Challenger	Bottom trawl	38°52.000'S	167°06.000'E	
Northwest Challenger	Northwest Challenger	Bottom trawl	37°48.000'S	167°06.000'E	
Northwest Challenger	Northwest Challenger	Bottom trawl	37°48.000'S	167°00.000'E	
Northwest Challenger	Northwest Challenger	Bottom trawl	37°42.000'S	167°00.000'E	
Northwest Challenger	Northwest Challenger	Bottom trawl	37°42.000'S	166°40.000'E	
Northwest Challenger	Northwest Challenger	Bottom trawl	37°01.333'S	166°40.000'E	
Northwest Challenger	Northwest Challenger	Bottom trawl	37°01.333'S	169°36.706'E	South-east along the New Zealand EEZ
Northwest Challenger	Northwest Challenger	Bottom trawl	37°29.902'S	170°00.000'E	Due south to a point on the New Zealand EEZ
Northwest Challenger	Northwest Challenger	Bottom trawl	37°41.589'S	170°00.000'E	South-west along the New Zealand EEZ
Box 1	S. Tasman Rise 1	Bottom trawl	47°08.280'S	147°50.200'E	Start on the Australian EEZ
Box 1	S. Tasman Rise 1	Bottom trawl	47°17.370'S	147°50.200'E	
Box 1	S. Tasman Rise 1	Bottom trawl	47°17.370'S	147°32.300'E	
Box 1	S. Tasman Rise 1	Bottom trawl	47°10.197'S	147°32.300'E	East along the Australian EEZ to the start point
Box 2	S. Tasman Rise 2	Bottom trawl	47°05.160'S	148°24.165'E	
Box 2	S. Tasman Rise 2	Bottom trawl	47°05.160'S	148°50.670'E	
Box 2	S. Tasman Rise 2	Bottom trawl	47°13.780'S	148°24.165'E	
Box 2	S. Tasman Rise 2	Bottom trawl	47°13.780'S	148°50.670'E	
Box 3	S. Tasman Rise 3	Bottom trawl	47°21.000'S	148°45.610'E	



Block Name	Locality	Method	Latitude	Longitude	EEZ Direction
Box 3	S. Tasman Rise 3	Bottom trawl	47°21.000'S	149°03.200'E	
Box 3	S. Tasman Rise 3	Bottom trawl	47°24.015'S	148°37.235'E	
Box 3	S. Tasman Rise 3	Bottom trawl	47°24.015'S	148°45.610'E	
Box 3	S. Tasman Rise 3	Bottom trawl	47°24.800'S	149°03.200'E	
Box 3	S. Tasman Rise 3	Bottom trawl	47°30.320'S	148°44.390'E	
Box 3	S. Tasman Rise 3	Bottom trawl	47°30.320'S	148°57.650'E	
Box 3	S. Tasman Rise 3	Bottom trawl	47°35.205'S	148°37.235'E	
Box 3	S. Tasman Rise 3	Bottom trawl	47°35.205'S	148°44.390'E	
S. Lord Howe - West	S. Lord Howe	Bottom trawl	35°31.000'S	164°54.000'E	
S. Lord Howe - South	S. Lord Howe	Bottom trawl	36°13.460'S	164°40.830'E	
S. Lord Howe - South	S. Lord Howe	Bottom trawl	36°13.460'S	165°06.050'E	
S. Lord Howe - South	S. Lord Howe	Bottom trawl	36°26.800'S	164°40.830'E	
S. Lord Howe - South	S. Lord Howe	Bottom trawl	36°26.800'S	165°06.050'E	
Wanganella	West Norfolk Ridge	Bottom trawl	33°28.000'S	167°42.000'E	
Wanganella	West Norfolk Ridge	Bottom trawl	33°28.000'S	168°00.000'E	
Wanganella	West Norfolk Ridge	Bottom trawl	33°52.000'S	167°13.000'E	
Wanganella	West Norfolk Ridge	Bottom trawl	33°52.000'S	167°42.000'E	
Wanganella	West Norfolk Ridge	Bottom trawl	34°12.000'S	167°13.000'E	
Wanganella	West Norfolk Ridge	Bottom trawl	34°12.000'S	168°00.000'E	
Westpac Bank	Westpac Bank	Bottom trawl	39°39.000'S	167°05.000'E	
Westpac Bank	Westpac Bank	Bottom trawl	39°39.000'S	167°21.090'E	
Westpac Bank	Westpac Bank	Bottom trawl	39°55.000'S	167°05.000'E	
Westpac Bank	Westpac Bank	Bottom trawl	39°55.000'S	167°21.090'E	



b) Mid-water Trawl Management Area coordinates

Block name	Locality	Method	Latitude	Longitude	EEZ Direction
S. Lord Howe - East	C. Lord Howe	Mid-water trawl	35°26.000'S	165°44.000'E	
S. Lord Howe - East	C. Lord Howe	Mid-water trawl	35°26.000'S	166°21.915'E	
S. Lord Howe - East	C. Lord Howe	Mid-water trawl	35°47.000'S	165°26.000'E	
S. Lord Howe - East	C. Lord Howe	Mid-water trawl	35°47.000'S	165°44.000'E	
S. Lord Howe - East	C. Lord Howe	Mid-water trawl	36°00.500'S	165°26.000'E	
S. Lord Howe - East	C. Lord Howe	Mid-water trawl	36°00.500'S	166°21.915'E	
S. Lord Howe - West	C. Lord Howe	Mid-water trawl	35°21.000'S	165°13.550'E	
S. Lord Howe - West	C. Lord Howe	Mid-water trawl	35°21.000'S	165°24.000'E	
S. Lord Howe - West	C. Lord Howe	Mid-water trawl	35°31.000'S	164°54.000'E	
S. Lord Howe - West	C. Lord Howe	Mid-water trawl	35°31.000'S	165°13.550'E	
S. Lord Howe - West	C. Lord Howe	Mid-water trawl	35°40.383'S	165°18.000'E	
S. Lord Howe - West	C. Lord Howe	Mid-water trawl	35°40.383'S	165°24.000'E	
S. Lord Howe - West	C. Lord Howe	Mid-water trawl	35°54.000'S	164°46.000'E	
S. Lord Howe - West	C. Lord Howe	Mid-water trawl	35°54.000'S	164°54.000'E	
S. Lord Howe - West	C. Lord Howe	Mid-water trawl	36°06.000'S	164°46.000'E	
S. Lord Howe - West	C. Lord Howe	Mid-water trawl	36°06.000'S	165°18.000'E	
1	Louisville Ridge	Mid-water trawl	47°40.000'S	149°27.000'W	
1	Louisville Ridge	Mid-water trawl	47°40.000'S	150°00.000'W	



Block name	Locality	Method	Latitude	Longitude	EEZ Direction
1	Louisville Ridge	Mid-water trawl	48°05.000'S	149°27.000'W	
1	Louisville Ridge	Mid-water trawl	48°05.000'S	150°00.000'W	
3	Louisville Ridge	Mid-water trawl	45°59.000'S	154°07.224'W	
3	Louisville Ridge	Mid-water trawl	45°59.000'S	154°28.653'W	
3	Louisville Ridge	Mid-water trawl	46°15.000'S	154°07.224'W	
3	Louisville Ridge	Mid-water trawl	46°15.000'S	154°28.653'W	
4	Louisville Ridge	Mid-water trawl	46°01.000'S	155°40.000'W	
4	Louisville Ridge	Mid-water trawl	46°01.000'S	156°10.000'W	
4	Louisville Ridge	Mid-water trawl	46°24.000'S	155°40.000'W	
4	Louisville Ridge	Mid-water trawl	46°24.000'S	156°10.000'W	
5	Louisville Ridge	Mid-water trawl	45°26.000'S	156°30.000'W	
5	Louisville Ridge	Mid-water trawl	45°26.000'S	156°55.000'W	
5	Louisville Ridge	Mid-water trawl	45°42.000'S	156°30.000'W	
5	Louisville Ridge	Mid-water trawl	45°42.000'S	156°55.000'W	
6	Louisville Ridge	Mid-water trawl	45°19.500'S	157°19.000'W	
6	Louisville Ridge	Mid-water trawl	45°19.500'S	157°55.000'W	
6	Louisville Ridge	Mid-water trawl	45°30.000'S	157°19.000'W	
6	Louisville Ridge	Mid-water trawl	45°30.000'S	157°55.000'W	
7	Louisville Ridge	Mid-water trawl	44°43.950'S	158°18.000'W	



Block name	Locality	Method	Latitude	Longitude	EEZ Direction
7	Louisville Ridge	Mid-water trawl	44°43.950'S	158°38.000'W	
7	Louisville Ridge	Mid-water trawl	44°57.950'S	158°18.000'W	
7	Louisville Ridge	Mid-water trawl	44°57.950'S	158°38.000'W	
8	Louisville Ridge	Mid-water trawl	44°13.000'S	159°43.000'W	
8	Louisville Ridge	Mid-water trawl	44°13.000'S	159°54.000'W	
8	Louisville Ridge	Mid-water trawl	44°21.000'S	159°43.000'W	
8	Louisville Ridge	Mid-water trawl	44°21.000'S	159°54.000'W	
9	Louisville Ridge	Mid-water trawl	43°51.183'S	160°29.235'W	
9	Louisville Ridge	Mid-water trawl	43°51.183'S	160°50.820'W	
9	Louisville Ridge	Mid-water trawl	44°07.000'S	160°29.235'W	
9	Louisville Ridge	Mid-water trawl	44°07.000'S	160°50.820'W	
10	Louisville Ridge	Mid-water trawl	43°22.000'S	161°21.770'W	
10	Louisville Ridge	Mid-water trawl	43°22.000'S	161°39.000'W	
10	Louisville Ridge	Mid-water trawl	43°31.370'S	161°10.170'W	
10	Louisville Ridge	Mid-water trawl	43°31.370'S	161°21.770'W	
10	Louisville Ridge	Mid-water trawl	43°41.440'S	161°10.170'W	
10	Louisville Ridge	Mid-water trawl	43°41.440'S	161°39.000'W	
11	Louisville Ridge	Mid-water trawl	42°40.000'S	161°48.000'W	
11	Louisville Ridge	Mid-water trawl	42°40.000'S	162°07.000'W	



Block name	Locality	Method	Latitude	Longitude	EEZ Direction
11	Louisville Ridge	Mid-water trawl	42°54.500'S	161°48.000'W	
11	Louisville Ridge	Mid-water trawl	42°54.500'S	162°07.000'W	
13	Louisville Ridge	Mid-water trawl	41°45.000'S	163°29.500'W	
13	Louisville Ridge	Mid-water trawl	41°45.000'S	163°49.000'W	
13	Louisville Ridge	Mid-water trawl	42°00.000'S	163°29.500'W	
13	Louisville Ridge	Mid-water trawl	42°00.000'S	163°49.000'W	
14	Louisville Ridge	Mid-water trawl	41°17.000'S	164°00.000'W	
14	Louisville Ridge	Mid-water trawl	41°17.000'S	164°27.000'W	
14	Louisville Ridge	Mid-water trawl	41°40.000'S	164°00.000'W	
14	Louisville Ridge	Mid-water trawl	41°40.000'S	164°27.000'W	
15	Louisville Ridge	Mid-water trawl	40°32.897'S	165°12.000'W	
15	Louisville Ridge	Mid-water trawl	40°32.897'S	165°30.000'W	
15	Louisville Ridge	Mid-water trawl	40°42.000'S	164°56.400'W	
15	Louisville Ridge	Mid-water trawl	40°42.000'S	165°12.000'W	
15	Louisville Ridge	Mid-water trawl	40°48.000'S	165°24.000'W	
15	Louisville Ridge	Mid-water trawl	40°48.000'S	165°30.000'W	
15	Louisville Ridge	Mid-water trawl	40°54.000'S	165°12.000'W	
15	Louisville Ridge	Mid-water trawl	40°54.000'S	165°24.000'W	
15	Louisville Ridge	Mid-water trawl	41°06.000'S	164°56.400'W	



Block name	Locality	Method	Latitude	Longitude	EEZ Direction
15	Louisville Ridge	Mid-water trawl	41°06.000'S	165°12.000'W	
17	Louisville Ridge	Mid-water trawl	38°20.013'S	167°29.000'W	
17	Louisville Ridge	Mid-water trawl	38°20.013'S	167°47.067'W	
17	Louisville Ridge	Mid-water trawl	38°32.000'S	167°29.000'W	
17	Louisville Ridge	Mid-water trawl	38°32.000'S	167°47.067'W	
18	Louisville Ridge	Mid-water trawl	38°11.013'S	168°01.785'W	
18	Louisville Ridge	Mid-water trawl	38°11.013'S	168°20.000'W	
18	Louisville Ridge	Mid-water trawl	38°40.000'S	168°01.785'W	
18	Louisville Ridge	Mid-water trawl	38°40.000'S	168°20.000'W	
22	Louisville Ridge	Mid-water trawl	36°45.000'S	169°30.000'W	
22	Louisville Ridge	Mid-water trawl	36°45.000'S	170°00.000'W	
22	Louisville Ridge	Mid-water trawl	37°08.000'S	169°30.000'W	
22	Louisville Ridge	Mid-water trawl	37°08.000'S	170°00.000'W	
23	Louisville Ridge	Mid-water trawl	36°00.000'S	169°22.000'W	
23	Louisville Ridge	Mid-water trawl	36°00.000'S	169°40.000'W	
23	Louisville Ridge	Mid-water trawl	36°10.000'S	169°22.000'W	
23	Louisville Ridge	Mid-water trawl	36°10.000'S	169°40.000'W	
N. Lord Howe - Central	N. Lord Howe	Mid-water trawl	33°49.630'S	162°25.670'E	
N. Lord Howe - Central	N. Lord Howe	Mid-water trawl	33°48.622'S	162°25.670'E	North-east along the Australian EEZ



Block name	Locality	Method	Latitude	Longitude	EEZ Direction
N. Lord Howe - Central	N. Lord Howe	Mid-water trawl	33°32.530'S	162°38.450'E	
N. Lord Howe - Central	N. Lord Howe	Mid-water trawl	33°32.530'S	162°57.770'E	
N. Lord Howe - Central	N. Lord Howe	Mid-water trawl	33°49.630'S	162°57.770'E	
N. Lord Howe - East	N. Lord Howe	Mid-water trawl	32°54.650'S	163°16.615'E	
N. Lord Howe - East	N. Lord Howe	Mid-water trawl	32°54.650'S	163°26.380'E	
N. Lord Howe - East	N. Lord Howe	Mid-water trawl	33°04.400'S	163°16.615'E	
N. Lord Howe - East	N. Lord Howe	Mid-water trawl	33°04.400'S	163°26.380'E	
N. Lord Howe - South	N. Lord Howe	Mid-water trawl	33°58.670'S	162°20.000'E	
N. Lord Howe - South	N. Lord Howe	Mid-water trawl	33°58.670'S	163°00.000'E	
N. Lord Howe - South	N. Lord Howe	Mid-water trawl	34°40.000'S	162°20.000'E	
N. Lord Howe - South	N. Lord Howe	Mid-water trawl	34°40.000'S	163°00.000'E	
N. Lord Howe - West	N. Lord Howe	Mid-water trawl	33°16.400'S	162°52.540'E	
N. Lord Howe - West	N. Lord Howe	Mid-water trawl	33°09.296'S	162°52.540'E	North-east along the Australian EEZ
N. Lord Howe - West	N. Lord Howe	Mid-water trawl	33°04.400'S	162°54.941'E	
N. Lord Howe - West	N. Lord Howe	Mid-water trawl	33°04.400'S	163°10.540'E	
N. Lord Howe - West	N. Lord Howe	Mid-water trawl	33°10.400'S	163°04.540'E	
N. Lord Howe - West	N. Lord Howe	Mid-water trawl	33°10.400'S	163°10.540'E	
N. Lord Howe - West	N. Lord Howe	Mid-water trawl	33°16.400'S	163°04.540'E	
Northwest Challenger	Northwest Challenger	Mid-water trawl	37°01.333'S	166°40.000'E	



Block name	Locality	Method	Latitude	Longitude	EEZ Direction
Northwest Challenger	Northwest Challenger	Mid-water trawl	37°01.333'S	169°36.706'E	South-east along the New Zealand EEZ
Northwest Challenger	Northwest Challenger	Mid-water trawl	37°29.902'S	170°00.000'E	Due south to a point on the New Zealand EEZ
Northwest Challenger	Northwest Challenger	Mid-water trawl	37°41.589'S	170°00.000'E	South-west along the New Zealand EEZ
Northwest Challenger	Northwest Challenger	Mid-water trawl	38°00.000'S	169°47.848'E	
Northwest Challenger	Northwest Challenger	Mid-water trawl	38°00.000'S	169°42.000'E	
Northwest Challenger	Northwest Challenger	Mid-water trawl	37°48.000'S	169°42.000'E	
Northwest Challenger	Northwest Challenger	Mid-water trawl	37°48.000'S	169°24.000'E	
Northwest Challenger	Northwest Challenger	Mid-water trawl	37°42.000'S	169°24.000'E	
Northwest Challenger	Northwest Challenger	Mid-water trawl	37°42.000'S	167°42.004'E	
Northwest Challenger	Northwest Challenger	Mid-water trawl	37°48.000'S	167°42.000'E	
Northwest Challenger	Northwest Challenger	Mid-water trawl	37°48.000'S	167°24.000'E	
Northwest Challenger	Northwest Challenger	Mid-water trawl	39°06.000'S	167°24.000'E	
Northwest Challenger	Northwest Challenger	Mid-water trawl	39°06.000'S	167°18.000'E	
Northwest Challenger	Northwest Challenger	Mid-water trawl	38°52.000'S	167°18.000'E	
Northwest Challenger	Northwest Challenger	Mid-water trawl	38°52.000'S	167°06.000'E	
Northwest Challenger	Northwest Challenger	Mid-water trawl	37°48.000'S	167°06.000'E	
Northwest Challenger	Northwest Challenger	Mid-water trawl	37°48.000'S	167°00.000'E	
Northwest Challenger	Northwest Challenger	Mid-water trawl	37°42.000'S	167°00.000'E	
Northwest Challenger	Northwest Challenger	Mid-water trawl	37°42.000'S	166°40.000'E	



Block name	Locality	Method	Latitude	Longitude	EEZ Direction
S. Lord Howe - South	S. Lord Howe	Mid-water trawl	36°13.460'S	164°40.830'E	
S. Lord Howe - South	S. Lord Howe	Mid-water trawl	36°13.460'S	165°06.050'E	
S. Lord Howe - South	S. Lord Howe	Mid-water trawl	36°26.800'S	164°40.830'E	
S. Lord Howe - South	S. Lord Howe	Mid-water trawl	36°26.800'S	165°06.050'E	
Box 1	S. Tasman Rise 1	Mid-water trawl	47°08.280'S	147°50.200'E	Start on the Australian EEZ
Box 1	S. Tasman Rise 1	Mid-water trawl	47°17.370'S	147°50.200'E	
Box 1	S. Tasman Rise 1	Mid-water trawl	47°17.370'S	147°32.300'E	
Box 1	S. Tasman Rise 1	Mid-water trawl	47°10.197'S	147°32.300'E	East along the Australian EEZ to the start point
Box 2	S. Tasman Rise 2	Mid-water trawl	47°05.160'S	148°24.165'E	
Box 2	S. Tasman Rise 2	Mid-water trawl	47°05.160'S	148°50.670'E	
Box 2	S. Tasman Rise 2	Mid-water trawl	47°13.780'S	148°24.165'E	
Box 2	S. Tasman Rise 2	Mid-water trawl	47°13.780'S	148°50.670'E	
Box 3	S. Tasman Rise 3	Mid-water trawl	47°21.000'S	148°45.610'E	
Box 3	S. Tasman Rise 3	Mid-water trawl	47°21.000'S	149°03.200'E	
Box 3	S. Tasman Rise 3	Mid-water trawl	47°24.015'S	148°37.235'E	
Box 3	S. Tasman Rise 3	Mid-water trawl	47°24.015'S	148°45.610'E	
Box 3	S. Tasman Rise 3	Mid-water trawl	47°24.800'S	149°03.200'E	
Box 3	S. Tasman Rise 3	Mid-water trawl	47°30.320'S	148°44.390'E	
Box 3	S. Tasman Rise 3	Mid-water trawl	47°30.320'S	148°57.650'E	



Block name	Locality	Method	Latitude	Longitude	EEZ Direction
Box 3	S. Tasman Rise 3	Mid-water trawl	47°35.205'S	148°37.235'E	
Box 3	S. Tasman Rise 3	Mid-water trawl	47°35.205'S	148°44.390'E	
Wanganella	West Ridge Norfolk	Mid-water trawl	33°28.000'S	167°42.000'E	
Wanganella	West Ridge Norfolk	Mid-water trawl	33°28.000'S	168°00.000'E	
Wanganella	West Ridge Norfolk	Mid-water trawl	33°52.000'S	167°13.000'E	
Wanganella	West Ridge Norfolk	Mid-water trawl	33°52.000'S	167°42.000'E	
Wanganella	West Ridge Norfolk	Mid-water trawl	34°12.000'S	167°13.000'E	
Wanganella	West Ridge Norfolk	Mid-water trawl	34°12.000'S	168°00.000'E	
Westpac Bank	Westpac Bank	Mid-water trawl	39°39.000'S	167°05.000'E	
Westpac Bank	Westpac Bank	Mid-water trawl	39°39.000'S	167°21.090'E	
Westpac Bank	Westpac Bank	Mid-water trawl	39°55.000'S	167°05.000'E	
Westpac Bank	Westpac Bank	Mid-water trawl	39°55.000'S	167°21.090'E	



c) Bottom Line Management Area coordinates

Block name	Locality	Method	Latitude	Longitude	EEZ Direction
S. Lord Howe	C. Lord Howe	Bottom Line	35°20.000'S	165°00.000'E	
S. Lord Howe	C. Lord Howe	Bottom Line	35°20.000'S	166°21.915'E	
S. Lord Howe	C. Lord Howe	Bottom Line	35°31.000'S	164°54.000'E	
S. Lord Howe	C. Lord Howe	Bottom Line	35°31.000'S	165°00.000'E	
S. Lord Howe	C. Lord Howe	Bottom Line	35°54.000'S	164°46.000'E	
S. Lord Howe	C. Lord Howe	Bottom Line	35°54.000'S	164°54.000'E	
S. Lord Howe	C. Lord Howe	Bottom Line	36°00.500'S	165°18.000'E	
S. Lord Howe	C. Lord Howe	Bottom Line	36°00.500'S	166°21.915'E	
S. Lord Howe	C. Lord Howe	Bottom Line	36°06.000'S	164°46.000'E	
S. Lord Howe	C. Lord Howe	Bottom Line	36°06.000'S	165°18.000'E	
North Lord Howe Rise	Capel bank	Bottom Line	25°14.950'S	159°00.285'E	
North Lord Howe Rise	Capel bank	Bottom Line	25°14.950'S	160°00.000'E	
North Lord Howe Rise	Capel bank	Bottom Line	25°59.640'S	159°00.285'E	
North Lord Howe Rise	Capel bank	Bottom Line	25°59.640'S	160°00.000'E	
Central Challenger	Central Challenger	Bottom Line	37°45.615'S	168°35.830'E	
Central Challenger	Central Challenger	Bottom Line	37°55.230'S	168°35.830'E	
Central Challenger	Central Challenger	Bottom Line	37°55.230'S	169°25.400'E	
Central Challenger	Central Challenger	Bottom Line	38°13.830'S	169°25.400'E	South-west along the New Zealand EEZ
Central Challenger	Central Challenger	Bottom Line	38°23.165'S	169°11.967'E	
Central Challenger	Central Challenger	Bottom Line	38°23.165'S	168°30.780'E	
Central Challenger	Central Challenger	Bottom Line	38°32.750'S	168°30.780'E	
Central Challenger	Central Challenger	Bottom Line	38°32.750'S	167°57.950'E	



Block name	Locality	Method	Latitude	Longitude	EEZ Direction
Central Challenger	Central Challenger	Bottom Line	39°17.180'S	167°57.950'E	
Central Challenger	Central Challenger	Bottom Line	39°17.180'S	167°30.500'E	
Central Challenger	Central Challenger	Bottom Line	38°06.430'S	167°30.500'E	
Central Challenger	Central Challenger	Bottom Line	38°06.430'S	168°09.833'E	
Central Challenger	Central Challenger	Bottom Line	37°45.615'S	168°09.833'E	
Gascoyne	Gascoyne	Bottom Line	36°19.950'S	155°53.630'E	
Gascoyne	Gascoyne	Bottom Line	36°19.950'S	156°43.770'E	
Gascoyne	Gascoyne	Bottom Line	36°59.440'S	155°53.630'E	
Gascoyne	Gascoyne	Bottom Line	36°59.440'S	156°43.770'E	
1	Louisville Ridge	Bottom Line	47°40.000'S	149°27.000'W	
1	Louisville Ridge	Bottom Line	47°40.000'S	150°00.000'W	
1	Louisville Ridge	Bottom Line	48°05.000'S	149°27.000'W	
1	Louisville Ridge	Bottom Line	48°05.000'S	150°00.000'W	
3	Louisville Ridge	Bottom Line	45°59.000'S	154°07.224'W	
3	Louisville Ridge	Bottom Line	45°59.000'S	154°28.653'W	
3	Louisville Ridge	Bottom Line	46°15.000'S	154°07.224'W	
3	Louisville Ridge	Bottom Line	46°15.000'S	154°28.653'W	
4	Louisville Ridge	Bottom Line	46°01.000'S	155°40.000'W	
4	Louisville Ridge	Bottom Line	46°01.000'S	156°10.000'W	
4	Louisville Ridge	Bottom Line	46°24.000'S	155°40.000'W	
4	Louisville Ridge	Bottom Line	46°24.000'S	156°10.000'W	
5	Louisville Ridge	Bottom Line	45°26.000'S	156°30.000'W	
5	Louisville Ridge	Bottom Line	45°26.000'S	156°55.000'W	
5	Louisville Ridge	Bottom Line	45°42.000'S	156°30.000'W	
5	Louisville Ridge	Bottom Line	45°42.000'S	156°55.000'W	
6	Louisville Ridge	Bottom Line	45°19.500'S	157°19.000'W	



Block name	Locality	Method	Latitude	Longitude	EEZ Direction
6	Louisville Ridge	Bottom Line	45°19.500'S	157°55.000'W	
6	Louisville Ridge	Bottom Line	45°30.000'S	157°19.000'W	
6	Louisville Ridge	Bottom Line	45°30.000'S	157°55.000'W	
7	Louisville Ridge	Bottom Line	44°43.950'S	158°18.000'W	
7	Louisville Ridge	Bottom Line	44°43.950'S	158°38.000'W	
7	Louisville Ridge	Bottom Line	44°57.950'S	158°18.000'W	
7	Louisville Ridge	Bottom Line	44°57.950'S	158°38.000'W	
8	Louisville Ridge	Bottom Line	44°13.000'S	159°43.000'W	
8	Louisville Ridge	Bottom Line	44°13.000'S	159°54.000'W	
8	Louisville Ridge	Bottom Line	44°21.000'S	159°43.000'W	
8	Louisville Ridge	Bottom Line	44°21.000'S	159°54.000'W	
9	Louisville Ridge	Bottom Line	43°51.183'S	160°29.235'W	
9	Louisville Ridge	Bottom Line	43°51.183'S	160°50.820'W	
9	Louisville Ridge	Bottom Line	44°07.000'S	160°29.235'W	
9	Louisville Ridge	Bottom Line	44°07.000'S	160°50.820'W	
10	Louisville Ridge	Bottom Line	43°22.000'S	161°21.770'W	
10	Louisville Ridge	Bottom Line	43°22.000'S	161°39.000'W	
10	Louisville Ridge	Bottom Line	43°31.370'S	161°10.170'W	
10	Louisville Ridge	Bottom Line	43°31.370'S	161°21.770'W	
10	Louisville Ridge	Bottom Line	43°41.440'S	161°10.170'W	
10	Louisville Ridge	Bottom Line	43°41.440'S	161°39.000'W	
11	Louisville Ridge	Bottom Line	42°40.000'S	161°48.000'W	
11	Louisville Ridge	Bottom Line	42°40.000'S	162°07.000'W	
11	Louisville Ridge	Bottom Line	42°54.500'S	161°48.000'W	
11	Louisville Ridge	Bottom Line	42°54.500'S	162°07.000'W	
13	Louisville Ridge	Bottom Line	41°45.000'S	163°29.500'W	
13	Louisville Ridge	Bottom Line	41°45.000'S	163°49.000'W	
13	Louisville Ridge	Bottom Line	42°00.000'S	163°29.500'W	
13	Louisville Ridge	Bottom Line	42°00.000'S	163°49.000'W	



Block name	Locality	Method	Latitude	Longitude	EEZ Direction
14	Louisville Ridge	Bottom Line	41°17.000'S	164°00.000'W	
14	Louisville Ridge	Bottom Line	41°17.000'S	164°27.000'W	
14	Louisville Ridge	Bottom Line	41°40.000'S	164°00.000'W	
14	Louisville Ridge	Bottom Line	41°40.000'S	164°27.000'W	
15	Louisville Ridge	Bottom Line	40°32.897'S	165°12.000'W	
15	Louisville Ridge	Bottom Line	40°32.897'S	165°30.000'W	
15	Louisville Ridge	Bottom Line	40°42.000'S	164°56.400'W	
15	Louisville Ridge	Bottom Line	40°42.000'S	165°12.000'W	
15	Louisville Ridge	Bottom Line	40°48.000'S	165°24.000'W	
15	Louisville Ridge	Bottom Line	40°48.000'S	165°30.000'W	
15	Louisville Ridge	Bottom Line	40°54.000'S	165°12.000'W	
15	Louisville Ridge	Bottom Line	40°54.000'S	165°24.000'W	
15	Louisville Ridge	Bottom Line	41°06.000'S	164°56.400'W	
15	Louisville Ridge	Bottom Line	41°06.000'S	165°12.000'W	
17	Louisville Ridge	Bottom Line	38°20.013'S	167°29.000'W	
17	Louisville Ridge	Bottom Line	38°20.013'S	167°47.067'W	
17	Louisville Ridge	Bottom Line	38°32.000'S	167°29.000'W	
17	Louisville Ridge	Bottom Line	38°32.000'S	167°47.067'W	
18	Louisville Ridge	Bottom Line	38°11.013'S	168°01.785'W	
18	Louisville Ridge	Bottom Line	38°11.013'S	168°20.000'W	
18	Louisville Ridge	Bottom Line	38°40.000'S	168°01.785'W	
18	Louisville Ridge	Bottom Line	38°40.000'S	168°20.000'W	
22	Louisville Ridge	Bottom Line	36°45.000'S	169°30.000'W	
22	Louisville Ridge	Bottom Line	36°45.000'S	170°00.000'W	
22	Louisville Ridge	Bottom Line	37°08.000'S	169°30.000'W	
22	Louisville Ridge	Bottom Line	37°08.000'S	170°00.000'W	
23	Louisville Ridge	Bottom Line	36°00.000'S	169°22.000'W	
23	Louisville Ridge	Bottom Line	36°00.000'S	169°40.000'W	
23	Louisville Ridge	Bottom Line	36°10.000'S	169°22.000'W	



Block name	Locality	Method	Latitude	Longitude	EEZ Direction
23	Louisville Ridge	Bottom Line	36°10.000'S	169°40.000'W	
Marion	Marion	Bottom Line	27°59.155'S	175°19.590'E	
Marion	Marion	Bottom Line	27°59.155'S	175°40.370'E	
Marion	Marion	Bottom Line	28°19.800'S	175°19.590'E	
Marion	Marion	Bottom Line	28°19.800'S	175°40.370'E	
N. Lord Howe	N. Lord Howe	Bottom Line	32°39.630'S	163°04.415'E	Start on the Australian EEZ
N. Lord Howe	N. Lord Howe	Bottom Line	32°39.630'S	163°40.000'E	
N. Lord Howe	N. Lord Howe	Bottom Line	33°20.000'S	163°40.000'E	
N. Lord Howe	N. Lord Howe	Bottom Line	33°20.000'S	163°20.000'E	
N. Lord Howe	N. Lord Howe	Bottom Line	34°40.000'S	162°20.000'E	
N. Lord Howe	N. Lord Howe	Bottom Line	34°40.000'S	163°20.000'E	
N. Lord Howe	N. Lord Howe	Bottom Line	33°54.773'S	162°20.000'E	North-east along the Australian EEZ to the start point
Northwest Challenger	Northwest Challenger	Bottom Line	37°01.333'S	169°36.706'E	South-east along the New Zealand EEZ
Northwest Challenger	Northwest Challenger	Bottom Line	37°29.902'S	170°00.000'E	Due south to a point on the New Zealand EEZ
Northwest Challenger	Northwest Challenger	Bottom Line	37°41.589'S	170°00.000'E	South-west along the New Zealand EEZ
Northwest Challenger	Northwest Challenger	Bottom Line	38°00.000'S	169°47.848'E	
Northwest Challenger	Northwest Challenger	Bottom Line	38°00.000'S	169°42.000'E	
Northwest Challenger	Northwest Challenger	Bottom Line	37°48.000'S	169°42.000'E	
Northwest Challenger	Northwest Challenger	Bottom Line	37°48.000'S	169°24.000'E	
Northwest Challenger	Northwest Challenger	Bottom Line	37°42.000'S	169°24.000'E	
Northwest Challenger	Northwest Challenger	Bottom Line	37°42.000'S	167°42.000'E	
Northwest Challenger	Northwest Challenger	Bottom Line	37°48.000'S	167°42.000'E	
Northwest Challenger	Northwest Challenger	Bottom Line	37°48.000'S	167°24.000'E	



Block name	Locality	Method	Latitude	Longitude	EEZ Direction
Northwest Challenger	Northwest Challenger	Bottom Line	39°06.000'S	167°24.000'E	
Northwest Challenger	Northwest Challenger	Bottom Line	39°06.000'S	167°18.000'E	
Northwest Challenger	Northwest Challenger	Bottom Line	38°52.000'S	167°18.000'E	
Northwest Challenger	Northwest Challenger	Bottom Line	38°52.000'S	167°06.000'E	
Northwest Challenger	Northwest Challenger	Bottom Line	37°48.000'S	167°06.000'E	
Northwest Challenger	Northwest Challenger	Bottom Line	37°48.000'S	167°00.000'E	
Northwest Challenger	Northwest Challenger	Bottom Line	37°42.000'S	167°00.000'E	
Northwest Challenger	Northwest Challenger	Bottom Line	37°42.000'S	166°40.000'E	
Northwest Challenger	Northwest Challenger	Bottom Line	37°01.333'S	166°40.000'E	
S. Lord Howe - South	S. Lord Howe	Bottom Line	36°13.460'S	164°40.830'E	
S. Lord Howe - South	S. Lord Howe	Bottom Line	36°13.460'S	165°06.050'E	
S. Lord Howe - South	S. Lord Howe	Bottom Line	36°26.800'S	164°40.830'E	
S. Lord Howe - South	S. Lord Howe	Bottom Line	36°26.800'S	165°06.050'E	
Box 1	S. Tasman Rise 1	Bottom Line	47°08.280'S	147°50.200'E	Start on the Australian EEZ
Box 1	S. Tasman Rise 1	Bottom Line	47°17.370'S	147°50.200'E	
Box 1	S. Tasman Rise 1	Bottom Line	47°17.370'S	147°32.300'E	
Box 1	S. Tasman Rise 1	Bottom Line	47°10.197'S	147°32.300'E	East along the Australian EEZ to the start point
Box 2	S. Tasman Rise 2	Bottom Line	47°05.160'S	148°24.165'E	
Box 2	S. Tasman Rise 2	Bottom Line	47°05.160'S	148°50.670'E	
Box 2	S. Tasman Rise 2	Bottom Line	47°13.780'S	148°24.165'E	
Box 2	S. Tasman Rise 2	Bottom Line	47°13.780'S	148°50.670'E	
Box 3	S. Tasman Rise 3	Bottom Line	47°21.000'S	148°45.610'E	



Block name	Locality	Method	Latitude	Longitude	EEZ Direction
Box 3	S. Tasman Rise 3	Bottom Line	47°21.000'S	149°03.200'E	
Box 3	S. Tasman Rise 3	Bottom Line	47°24.015'S	148°37.235'E	
Box 3	S. Tasman Rise 3	Bottom Line	47°24.015'S	148°45.610'E	
Box 3	S. Tasman Rise 3	Bottom Line	47°24.800'S	149°03.200'E	
Box 3	S. Tasman Rise 3	Bottom Line	47°30.320'S	148°44.390'E	
Box 3	S. Tasman Rise 3	Bottom Line	47°30.320'S	148°57.650'E	
Box 3	S. Tasman Rise 3	Bottom Line	47°35.205'S	148°37.235'E	
Box 3	S. Tasman Rise 3	Bottom Line	47°35.205'S	148°44.390'E	
Three Kings	Three Kings	Bottom Line	30°49.324'S	172°42.880'E	Start on the New Zealand EEZ
Three Kings	Three Kings	Bottom Line	30°40.115'S	172°42.880'E	
Three Kings	Three Kings	Bottom Line	30°40.115'S	172°53.295'E	
Three Kings	Three Kings	Bottom Line	30°16.500'S	172°53.295'E	
Three Kings	Three Kings	Bottom Line	30°16.500'S	174°20.000'E	
Three Kings	Three Kings	Bottom Line	30°40.245'S	174°20.000'E	
Three Kings	Three Kings	Bottom Line	30°40.245'S	174°00.200'E	
Three Kings	Three Kings	Bottom Line	30°53.670'S	174°00.200'E	
Three Kings	Three Kings	Bottom Line	30°53.670'S	173°08.819'E	West along the New Zealand EEZ to the start point
West Norfolk Ridge	West Norfolk Ridge	Bottom Line	32°17.000'S	166°41.530'E	
West Norfolk Ridge	West Norfolk Ridge	Bottom Line	32°17.000'S	166°41.921'E	South-east along the Australian EEZ
West Norfolk Ridge	West Norfolk Ridge	Bottom Line	32°28.633'S	168°00.000'E	
West Norfolk Ridge	West Norfolk Ridge	Bottom Line	34°12.000'S	168°00.000'E	
West Norfolk Ridge	West Norfolk Ridge	Bottom Line	34°12.000'S	167°13.000'E	
West Norfolk Ridge	West Norfolk Ridge	Bottom Line	34°00.000'S	167°13.000'E	
West Norfolk Ridge	West Norfolk Ridge	Bottom Line	34°00.000'S	166°41.530'E	



Block name	Locality	Method	Latitude	Longitude	EEZ Direction
Westpac Bank	Westpac Bank	Bottom Line	39°39.000'S	167°05.000'E	
Westpac Bank	Westpac Bank	Bottom Line	39°39.000'S	167°21.090'E	
Westpac Bank	Westpac Bank	Bottom Line	39°55.000'S	167°05.000'E	
Westpac Bank	Westpac Bank	Bottom Line	39°55.000'S	167°21.090'E	



ANNEX 5: List of VME Indicator Taxa

Taxonomic Level	Common Name	Qualifying taxa
<i>Vulnerable taxa</i>		
Phylum Porifera	Sponges	All taxa of the classes Demospongiae and Hexactinellidae
Phylum Cnidaria		
Class Anthozoa		
Order Scleractinia	Stony corals	All taxa within the following genera: <i>Solenosmilia</i> ; <i>Goniocorella</i> ; <i>Oculina</i> ; <i>Enallopsammia</i> ; <i>Madrepora</i> ; <i>Lophelia</i>
Order Antipatharia	Black corals	All taxa
Order Alcyonacea	True soft corals	All taxa excluding Gorgonian Alcyonacea
Informal group Gorgonian Alcyonacea	Sea fans octocorals	All taxa within the following suborders: Holaxonia; Calaxonia; Scleraxonia
Order Pennatulacea	Sea pens	All taxa
Order Actiniaria	Anemones	All taxa
Order Zoantharia	Hexacorals	All taxa
Class Hydrozoa	Hydrozoans	All taxa within the orders Anthoathecata and Leptothecata, excluding Stylasteridae
Order Anthoathecatae		
Family Stylasteridae	Hydrocorals	All taxa
Phylum Bryozoa	Bryozoans	All taxa within the orders Cheilostomatida and Ctenostomatida
<i>Habitat indicators</i>		
Phylum Echinodermata		
Class Asteroidea		
Order Brisingida	Armless stars	All taxa
Class Crinoidea	Sea lillies	All taxa



ANNEX 6A: Weight Threshold for Triggering VME Encounter Protocol in Any One Tow for a Single VME Indicator Taxa

Taxonomic Level	Common Name	Weight Threshold (kg) Northwest Challenger and Central Louisville ⁶	Weight Threshold (kg) All other areas
Vulnerable taxa			
Phylum Porifera	Sponges	25	50
Phylum Cnidaria			
Class Anthozoa			
Order Scleractinia	Stony corals	60	80
Order Antipatharia	Black Corals	4.8	5
Informal group Gorgonian Alcyonacea	Seafan octocorals	7.2	15
Order Actiniaria	Anemones	30	40
Order Zoantharia	Hexacorals	10	10

ANNEX 6B: Weight Threshold for Triggering VME Encounter Protocol in Any One Tow for Three or More Different VME Indicator Taxa

Taxonomic Level	Common Name	Weight Threshold (kg)
-----------------	-------------	-----------------------

6

⁶ referred to in Clark et al. 2016 and used in AU-NZ Cumulative Bottom Fishery Impact Assessment for Australian and New Zealand bottom fisheries in the SPRFMO Convention Area, 2020 (SC8-DW07_rev1).



Vulnerable taxa		
Phylum Porifera	Sponges	5
Phylum Cnidaria		
Class Anthozoa		
Order Scleractinia	Stony corals	5
Order Antipatharia	Black corals	1
Order Alcyonacea	True soft corals	1
Informal group Gorgonian Alcyonacea	Seafan octocorals	1
Order Pennatulacea	Sea pens	1
Order Actiniaria	Anemones	5
Order Zoantharia	Hexacorals	1
Class Hydrozoa	Hydrozoans	1
Order Anthoathecatae		
Family Stylasteridae	Hydrocorals	1
Phylum Bryozoa	Bryozoans	1
Phylum Echinodermata		
Class Asteroidea		
Order Brisingida	Armless stars	1
Class Crinoidea	Sea lillies	1



ANNEX 7: Guidelines for the Preparation and Submission of Notifications of Encounters with Potential VMEs

1. General Information:

- a. Contact details
- b. Nationality
- c. Vessel name
- d. Date of fishing effort and notification
- e. Time of shot start (UTC)
- f. Time of shot end (UTC)
- g. Fishing gear used

2. Location Information:

Bottom trawl or mid-water trawl

- a. Start and end position of trawl (to nearest 0.01 decimal degree)

3. VME Information:

- a. Summary information:
 - i. Number of VME Indicator taxa encountered
 - ii. Total weight of VME Indicator taxa encountered
- b. Detailed information:
 - i. Weight of each VME Indicator taxa in tow (including any under threshold)

ANNEX 8: Minimum Observer Coverage Levels

Gear type	Minimum level of observer coverage
Vessels using bottom trawl and mid-water trawl gear	100% observer coverage
Bottom line gear	At least 10% observer coverage for the fishing year ⁷

⁷ Expressed as the percentage of the total number of observed hooks.