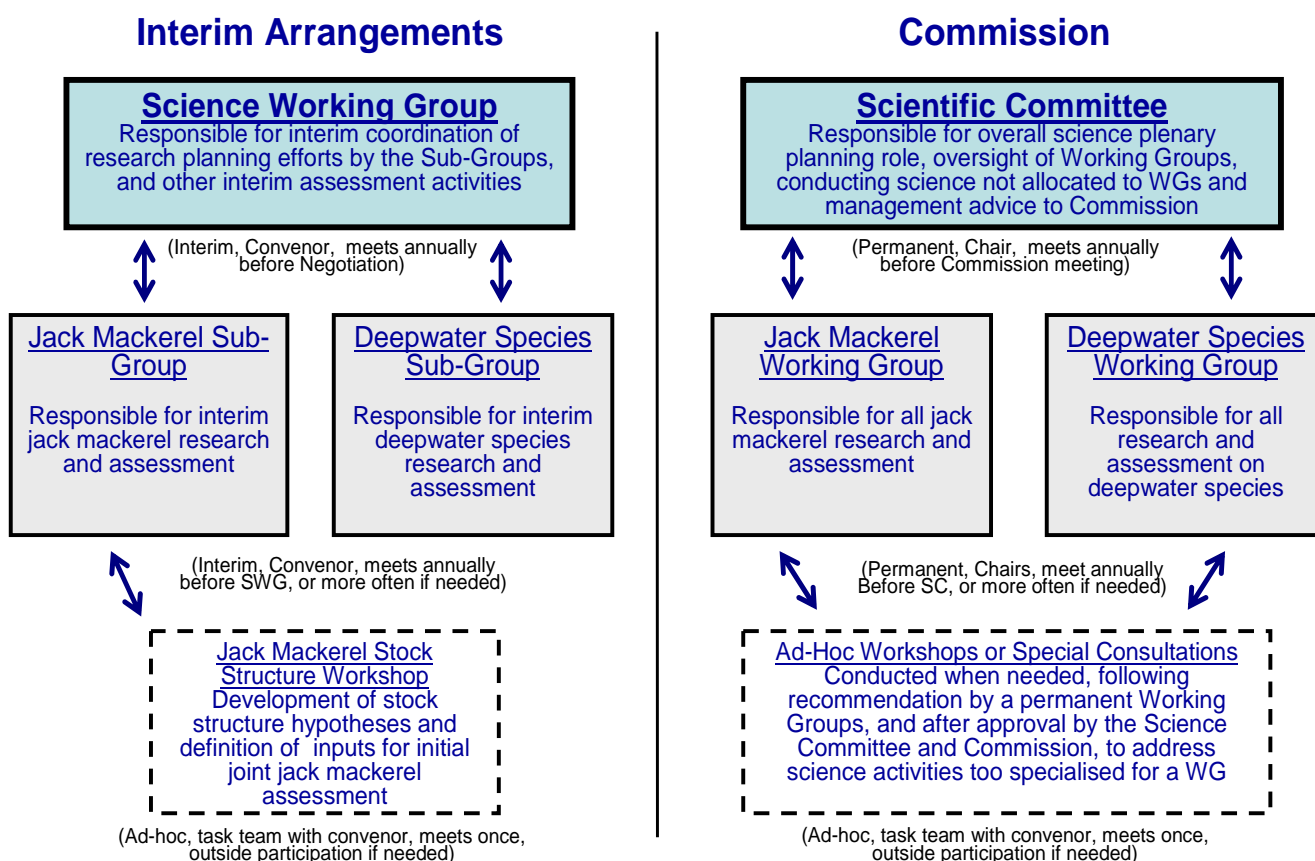


**International Consultations on the Establishment of the
South Pacific Regional Fisheries Management Organisation**

**PROPOSED INTERIM TERMS OF REFERENCE FOR THE
JACK MACKEREL SUB-GROUP & DEEPWATER SUB-GROUP**

Establishment of Interim Science Working Group Sub-Groups

At the 3rd SWG meeting in Reñaca, Chile, in April 2007, it was agreed to establish a Jack Mackerel Sub-Group. A Chairman for the Jack Mackerel Sub-Group (Mr S. Morrison of Australia) was chosen intersessionally, and the JM Sub-Group first met during the 4th SWG Meeting in Noumea, New Caledonia, in September 2007. The 4th SWG meeting also proposed the establishment of a Deepwater Species Sub-Group. The proposed future working relationship between the Scientific Committee and these subsidiary Working Groups was presented to the 4th SPRFMO negotiations, and is shown in the figure below:



Proposed Sub-Group Terms of Reference

Extracts from the Terms of Reference or Rules of Procedure of the Scientific Committees, or science-related subsidiary bodies, of a number of other RFMOs are provided in Appendix A. Key elements of these have been used to prepare the proposed draft interim Terms of Reference for SPRFMO SWG Sub-Groups shown below. The Terms of reference for the two Sub-Groups are essentially identical, except for the species which would fall under their mandate. These are intended to provide guidance on the responsibilities of the respective Sub-Groups during the interim period. These Terms of Reference would be revised as necessary for future scientific Working Groups, once SPRFMO has been established.

Jack Mackerel Sub-Group

The Jack Mackerel Sub-Group shall:

- i) Develop research programmes, and coordinate research activities, on jack mackerel (*Trachurus murphyi*) and related species in the SPRFMO area, where related species will be considered to be either biologically similar species, or ecologically related species, or species caught in association with jack mackerel, or species caught in jack mackerel fisheries.
- ii) Review the results of these research programmes and activities and assess the status and trends of the stocks of jack mackerel and related species in the SPRFMO area.
- iii) Provide advice to the Science Working Group on the status of the stocks, and evaluate conservation and management options, for jack mackerel and related species in the SPRFMO area.
- iv) Consider any other matter related to research and assessment of stocks of jack mackerel and related species referred to it by the Science Working Group.

Deepwater Species Sub-Group

The Deepwater Sub-Group shall:

- i) Develop research programmes, and coordinate research activities, on deepwater species caught in bottom fisheries in the SPRFMO area, including ecologically related species, species caught in association with deepwater species, and species caught in bottom fisheries.
- ii) Review the results of these research programmes and activities, and assess the status and trends of the stocks of deepwater species in the SPRFMO area.
- iii) Provide advice to the Science Working Group on the status of the stocks, and evaluate conservation and management options, for deepwater species in the SPRFMO area.
- iv) Consider any other matter related to research and assessment of stocks of deepwater species referred to it by the Science Working Group.

Appendix A**Overview of Terms of Reference for Scientific or Related Committees of Other RFMOs**

Quoted below are extracts from Convention Texts, Rules of Procedure or Terms of Reference for various subsidiary bodies concerned with aspects of scientific data analysis, research, assessment or provision of management advice to the West & Central Pacific Fisheries Commission (WCPFC), the Commission for the Conservation of Southern Bluefin Tuna (CCSBT) and the International Commission for the Conservation of Atlantic Tunas (ICCAT). Although much of this relates to the roles and functions of a scientific committee, and not specifically to subsidiary science bodies, many of the provisions remain relevant to the functions of a species-related scientific subsidiary body.

1. WCPFC Subsidiary Bodies: Terms of Reference**Section 2. Scientific Information and Advice**
Article 12: Functions of the Scientific Committee

1. The Scientific Committee is established to ensure that the Commission obtains for its consideration the best scientific information available.
 2. The functions of the Committee shall be to:
 - (a) recommend to the Commission a research plan, including specific issues and items to be addressed by the scientific experts or by other organizations or individuals, as appropriate, and identify data needs and coordinate activities that meet those needs;
 - (b) review the assessments, analyses, other work and recommendations prepared for the Commission by the scientific experts prior to consideration of such recommendations by the Commission and provide information, advice and comments thereon, as necessary;
 - (c) encourage and promote cooperation in scientific research, taking into account the provisions of article 246 of the 1982 Convention, in order to improve information on highly migratory fish stocks, non-target species, and species belonging to the same ecosystem or associated with or dependent upon such stocks in the Convention Area;
 - (d) review the results of research and analyses of target stocks or non-target or associated or dependent species in the Convention Area;
 - (e) report to the Commission its findings or conclusions on the status of target stocks or non-target or associated or dependent species in the Convention Area;
 - (f) in consultation with the Technical and Compliance Committee, recommend to the Commission the priorities and objectives of the regional observer programme and assess the results of that programme;
 - (g) make reports and recommendations to the Commission as directed, or on its own initiative, on matters concerning the conservation and management of and research on target stocks or non-target or associated or dependent species in the Convention Area; and
 - (h) perform such other functions and tasks as may be requested by or assigned to it by the Commission.
-

2. CCSBT Scientific Committee Terms of Reference

Article 9

1. The Parties hereby establish the Scientific Committee as an advisory body to the Commission.
 2. The Scientific Committee shall:
 - (a) assess and analyse the status and trends of the population of southern bluefin tuna;
 - (b) coordinate research and studies of southern bluefin tuna;
 - (c) report to the Commission its findings or conclusions, including consensus, majority and minority views, on the status of the southern bluefin tuna stock and, where appropriate, of ecologically related species;
 - (d) make recommendations, as appropriate, to the Commission by consensus on matters concerning the conservation, management and optimum utilisation of southern bluefin tuna;
 - (e) consider any matter referred to it by the Commission.
-

3. ICCAT Basic Texts: Rules of Procedure

Rule 13 - Committees

2. There shall be a Standing Committee on Research and Statistics on which each member country of the Commission may be represented. The Committee shall develop and recommend to the Commission such policies and procedures in the collection, compilation, analysis and dissemination of fishery statistics as may be necessary to ensure that the Commission has available at all times complete, current and equivalent statistics on fishery activities in the Convention area. The Committee shall keep under continuous review the research programmes in progress in the Convention area, and shall develop and recommend to the Commission from time to time such changes in existing programmes, or such new programmes as may be deemed desirable. The Committee shall also advise the Commission on such other scientific matters as may be referred to it. The Committee shall choose its own Chairman.

Sub-Committee On Ecosystems: Terms of Reference

These Terms of Reference have been developed as a result of a decision made by the SCRS in 2005 to merge the Sub-Committees on By-Catches and Environment into a single group.

The overall goal of the newly-created Sub-Committee on Ecosystems is to integrate the monitoring and research activities related to the ecosystem that are required by the SCRS in fulfilling its advisory role to the Commission. In so doing, the Sub-Committee will serve as the scientific cornerstone in support of an Ecosystem Approach to Fisheries (EAF) in ICCAT.

The Sub-Committee will meet as required by SCRS, usually in conjunction with the SCRS annual meeting. The Sub-Committee's work will encompass the specific tasks listed below, inter-alia. As these cannot all be realistically tackled at once, the SCRS will prioritize these tasks.

1. Monitoring
 - Create and maintain an inventory of species caught by fleets targeting tuna and tuna-like species in the Atlantic and Mediterranean.

- Improve conventional statistics (catch, effort, size) of ICCAT target species that are caught incidentally in non-targeted fisheries.
- Monitor and improve information on interactions with non-ICCAT target species, with emphasis on those species of interest to the Commission and for which no Species Group has been established (e.g., sea turtles and sea birds).
- Facilitate access by SCRS scientists to oceanographic and environmental data.

2. Research

- Evaluate the relative impact of the different abiotic and biotic factors (including oceanographic and climate phenomena, directed and incidental fishing, predation, competition, pollutions and other human impacts) that affect the abundance, distribution and migration of ICCAT target species.
- Characterize main feeding and reproductive habitats of ICCAT target species.
- Characterize the volume, composition and disposition of non- target species that are caught incidentally in tuna and tuna-like fisheries within the Convention area.
- Investigate trophic interactions of ICCAT target species.
- Investigate the impact that changes in fishing gears or fishing technology have on the catch of target and non-target species.

3. Modelling

- Develop reference points and indicators that explicitly incorporate ecosystem considerations.
- Develop simulation, dynamic and statistical models focusing on mixed-fisheries, multi-species, bycatch and ecosystem issues.

4. Advice

- Develop mechanisms which can be used to better integrate ecosystem considerations into the scientific advice provided by SCRS to the Commission, including but not limited to, Precautionary Approaches.
 - Investigate, through operational models, potential benefits (at an ecosystem level) of alternative management strategies, such as time-area closures.
 - Advise on the impacts of tuna and tuna-like fisheries on the populations of non-target species of interest to the Commission
-